

**Coprococcus sp., Strain HPP0048**

**Catalog No. HM-794**

**Product Description:** *Coprococcus* sp., strain HPP0048 was isolated from a biopsy of ileal-anal pouch mucosa of a human subject.

**Lot<sup>1,2</sup>: 62380437**

**Manufacturing Date: 27MAR2014**

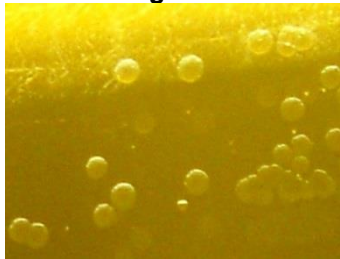
TEST	SPECIFICATIONS	RESULTS
<b>Phenotypic Analysis</b> Cellular morphology Colony morphology <sup>3</sup>  Motility (wet mount)	Gram-positive cocci Report results  Report results	Gram-positive cocci Circular, flat, undulate, smooth and opaque (Figure 1) Non-motile
<b>Genotypic Analysis</b> Sequencing of 16S ribosomal RNA gene (~ 870 base pairs)	≥ 99% identical to GenBank: AGEW01000008 ( <i>Coprococcus</i> sp., strain HPP0048)	≥ 99% identical to GenBank: AGEW01000008 ( <i>Coprococcus</i> sp., strain HPP0048)
<b>Viability (post-freeze)<sup>3</sup></b>	Growth	Growth

<sup>1</sup>Quality control of HMP material is only performed to demonstrate that the material distributed by BEI Resources is identical to the deposited material. It should not be considered a complete characterization of the deposited organism.

<sup>2</sup>*Coprococcus* sp., strain HPP0048 was deposited by Thomas M. Schmidt, Professor, Department of Microbiology and Molecular Genetics, Michigan State University, East Lansing, Michigan, USA. HM-794 was produced by inoculation of the deposited material into Chopped Meat Carbohydrate medium and grown 72 hours at 37°C in an anaerobic atmosphere (90% N<sub>2</sub>:5% CO<sub>2</sub>:5% H<sub>2</sub>). The material from the initial growth was passaged once in Chopped Meat Carbohydrate medium for 72 hours at 37°C in an anaerobic atmosphere to produce this lot. Purity of this lot was assessed for 7 days under propagation conditions.

<sup>3</sup>72 hours at 37°C in an anaerobic atmosphere on Chopped Meat Carbohydrate medium

Figure 1



**Date:** 28 MAY 2014

**Signature:**

**Title:** Technical Manager, BEI Authentication or designee

ATCC®, on behalf of BEI Resources, hereby represents and warrants that the material provided under this certificate has been subjected to the tests and procedures specified and that the results described, along with any other data provided in this certificate, are true and accurate to the best of ATCC®'s knowledge.

ATCC® is a trademark of the American Type Culture Collection. You are authorized to use this product for research use only. It is not intended for human use.

