

Complementary DNA from *Schistosoma mansoni*, Strain NMRI

Catalog No. NR-44213

This reagent is the tangible property of the U.S. Government.

Product Description: Complementary DNA (cDNA) was synthesized from RNA extracted from *Schistosoma mansoni* (*S. mansoni*), strain NMRI.

Lot^{1,2}: 62593774

Manufacturing Date: 24APR2014

TEST	SPECIFICATIONS	RESULTS
Concentration	Report results	1.0 µg in 20 µL per vial (0.05 µg/µL)
OD ₂₆₀ /OD ₂₈₀ Ratio	1.70 to 2.00	1.87
Qualification by RT-PCR Amplification of 28S ribosomal RNA gene ³	~ 290 base pair amplicon	~ 290 base pair amplicon (Figure 1)

¹QC testing was performed by the Biomedical Research Institute, Rockville, MD (NIH-NIAID Contract HHSN272201000005I)

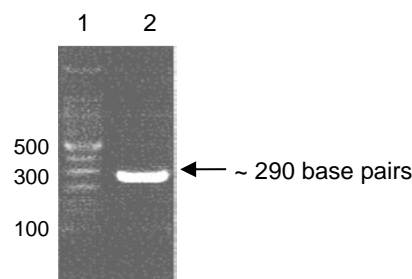
²cDNA was synthesized from total RNA by ProtoScript II[®] First Strand cDNA Synthesis Kit (New England BioLabs[®], Inc.), according to the manufacturer's instructions

³Primers were designed to amplify the nucleotide region 39 to 326 of *S. mansoni* 28S ribosomal RNA gene (GenBank Z46503.1).

Figure 1: Amplification of 28S Ribosomal RNA Gene for Qualification by RT-PCR

Lane 1: 100 base pair ladder

Lane 2: 290 base pair amplicon from *S. mansoni* 28S ribosomal RNA gene



Date: 17 JUN 2014

Signature:

Title:

Technical Manager, BEI Authentication or designee

ATCC[®], on behalf of BEI Resources, hereby represents and warrants that the material provided under this certificate has been subjected by the contributor to the tests and procedures specified and that the results described, along with any other data provided in this certificate, are true and accurate to the best of ATCC[®]'s knowledge.

ATCC[®] is a trademark of the American Type Culture Collection.

You are authorized to use this product for research use only. It is not intended for human use.

