

# Complementary DNA from *Schistosoma japonicum*, Philippine Strain, Miracidia

## Catalog No. NR-48638

This reagent is the tangible property of the U.S. Government.

**Product Description:** Complementary DNA (cDNA) was synthesized from RNA extracted from *Schistosoma japonicum*, Philippine strain, miracidia.

**Lot<sup>1,2</sup>:** 62506676

**Manufacturing Date:** 20FEB2014

TEST	SPECIFICATIONS	RESULTS
Concentration	Report results	1 µg in 20 µL per vial (0.05 µg/µL)
OD <sub>260</sub> /OD <sub>280</sub> Ratio	1.70 to 2.00	1.79
Qualification by RT-PCR Amplification of 28S ribosomal RNA gene <sup>3</sup>	~ 290 base pair amplicon	~ 290 base pair amplicon (Figure 1)

<sup>1</sup>QC testing was performed by the Biomedical Research Institute, Rockville, MD (NIH-NIAID Contract HHSN2722010000051)

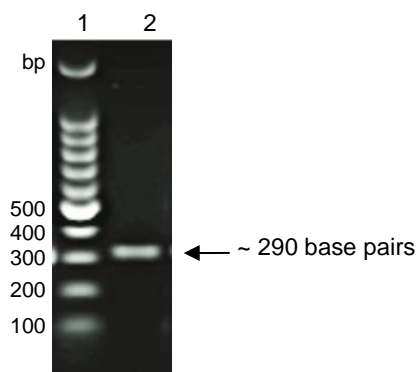
<sup>2</sup>cDNA was synthesized from total RNA by ProtoScript II<sup>®</sup> First Strand cDNA Synthesis Kit (New England BioLabs<sup>®</sup>, Inc.), according to the manufacturer's instructions.

<sup>3</sup>Primers were designed to amplify the nucleotide region 39 to 326 of *Schistosoma mansoni* (*S. mansoni*) 28S ribosomal RNA gene (GenBank: Z46503.1). Cross-amplification of the 28S gene from other *Schistosoma* species has been observed.

## Figure 1: Amplification of 28S Ribosomal RNA Gene for Qualification by RT-PCR

Lane 1: 100 base pair ladder

Lane 2: 290 base pair amplicon from *S. mansoni* 28S ribosomal RNA gene



**Date:** 23 JUN 2014

**Signature:**

**Title:**

Technical Manager, BEI Authentication or designee

ATCC<sup>®</sup>, on behalf of BEI Resources, hereby represents and warrants that the material provided under this certificate has been subjected by the contributor to the tests and procedures specified and that the results described, along with any other data provided in this certificate, are true and accurate to the best of ATCC<sup>®</sup>'s knowledge.

ATCC<sup>®</sup> is a trademark of the American Type Culture Collection.

You are authorized to use this product for research use only. It is not intended for human use.

