

Escherichia coli, Strain C309-64

Catalog No. NR-17650

Product Description: *Escherichia coli* (*E. coli*), strain C309-64 is a human isolate obtained in 1964; it has been typed as an enterohemorrhagic *E. coli* (EHEC) strain. **Note: The label refers to this item as strain C309-64 (10g). The (10g) is a lab designation that was used for tracking and is not part of the strain name.**

Lot¹: 61743359

Manufacturing Date: 02OCT2013

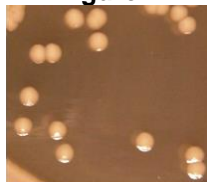
TEST	SPECIFICATIONS	RESULTS
Phenotypic Analysis Cellular morphology Colony morphology ² Motility (wet mount) Analytical profile index (API [®] 20 E)	Gram-negative rods Report results Report results Consistent with <i>E. coli</i>	Gram-negative rods Irregular, low convex, undulate, opaque, smooth and cream (Figure 1) Motile Consistent with <i>E. coli</i>
Genotypic Analysis Sequencing of 16S ribosomal RNA gene (~ 1490 base pairs) Riboprinter [®] Microbial Characterization System	Consistent with <i>E. coli</i> Consistent with <i>E. coli</i>	Consistent with <i>E. coli</i> ³ Consistent with <i>E. coli</i>
PCR Assay of Extracted DNA 16S ribosomal RNA gene PCR amplification of chromosomal borne virulence markers <i>stx1</i> <i>stx2</i>	~ 1500 bp amplicon Report results Report results	~ 1500 bp amplicon Negative Negative
Viability (post-freeze)²	Growth	Growth

¹The deposited material was inoculated into Tryptic Soy broth and grown 22 hours at 37°C in an aerobic atmosphere, and the resulting growth was viald and frozen. NR-17650 was produced by inoculation of the frozen subculture into Tryptic Soy broth and grown 20 hours under propagation conditions. Broth inoculum was added to Tryptic Soy agar kolles which were grown 27 hours under propagation conditions to produce this lot. Purity of this lot was assessed for 7 days on Tryptic Soy agar under propagation conditions.

²21 hours at 37°C in an aerobic atmosphere on Tryptic Soy agar

³Also consistent with *Shigella* species

Figure 1



Date: 09 MAR 2015

Signature:

Title:

Technical Manager, BEI Authentication or designee

ATCC[®], on behalf of BEI Resources, hereby represents and warrants that the material provided under this certificate has been subjected to the tests and procedures specified and that the results described, along with any other data provided in this certificate, are true and accurate to the best of ATCC[®]'s knowledge.

ATCC[®] is a trademark of the American Type Culture Collection.

You are authorized to use this product for research use only. It is not intended for human use.

