

Genomic RNA from Influenza A Virus, A/New Jersey/8/1976 (H1N1)

Catalog No. NR-43023

Product Description: Genomic RNA was isolated from a preparation of pooled allantoic fluid from specific pathogen free (SPF) embryonated chicken eggs¹ infected with influenza A virus, A/New Jersey/8/1976 (H1N1).

Lot²: 62432870

Manufacturing Date: 02APR2014

TEST	SPECIFICATIONS	RESULTS
Sequencing of Influenza A Specific Region Matrix gene (916 nucleotides)	Consistent with A/New Jersey/8/1976 (H1N1) Consistent with NR-21667	100% identity with A/New Jersey/8/1976 (H1N1) (GenBank: CY039992) Consistent with NR-21667
Functional Activity by RT-PCR Amplification^{3,4}	~ 1025 bp amplicon	~ 1025 bp amplicon (Figure 1)
Total RNA Content by RiboGreen[®] Measurement (Viral, Cellular and Carrier)	Report results	82 ng per 100 µL
Virus Inactivation 10% of total yield incubated in SPF embryonated chicken eggs ¹ and evaluated by hemagglutination assay ⁵	No virus detected	No virus detected

¹9- to 11-day-old SPF Embryonated Chicken Eggs acquired from B&E Eggs, York Springs, Pennsylvania

²Nucleic acid was extracted from a preparation of influenza A virus, A/New Jersey/8/1976 (H1N1) (BEI Resources NR-21667, Lot 59807781), using a QIAamp[®] Viral RNA Mini Kit (Qiagen 52906).

³Amplified using iScript[™] One-Step RT-PCR Kit with SYBR[®] Green (Bio-Rad 170-8892) with 5µL of NR-43023 in a 50 µL reaction

⁴The primers are described in Hoffmann, E., et al. "Universal Primer Set for the Full-Length Amplification of All Influenza A Viruses." *Arch. Virol.* 146 (2001): 2275-2289. PubMed: 11811679.

⁵Use of the QIAamp[®] Viral RNA Mini Kit has been demonstrated to consistently inactivate 100% of influenza viruses.

Date: 30 JUN 2014

Signature: 

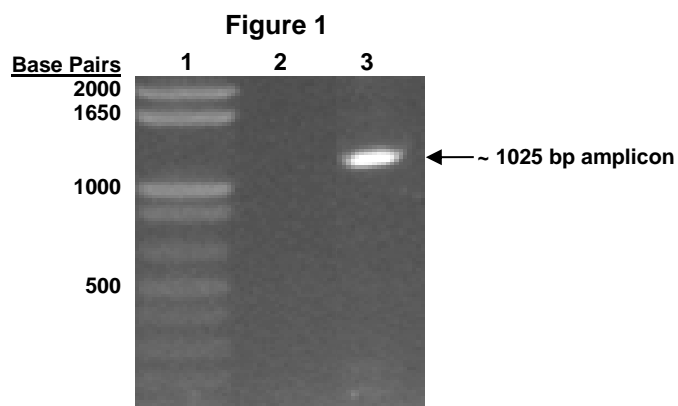
Title: Technical Manager, BEI Authentication or designee

ATCC[®], on behalf of BEI Resources, hereby represents and warrants that the material provided under this certificate has been subjected to the tests and procedures specified and that the results described, along with any other data provided in this certificate, are true and accurate to the best of ATCC[®]'s knowledge.

ATCC[®] is a trademark of the American Type Culture Collection.

You are authorized to use this product for research use only. It is not intended for human use.





Lane 1: Invitrogen™ TrackIt™ 1 Kb Plus DNA Ladder
Lane 2: Negative control
Lane 3: NR-43023