

***Mycobacterium tuberculosis*, Strain CDC1551, Whole Cell Lysate****Catalog No. NR-14823**

This reagent is the tangible property of the U.S. Government.

**Product Description:** *Mycobacterium tuberculosis*, strain CDC1551 whole cell lysate contains proteins, lipids and carbohydrates present within the bacterial cell. A culture was grown to late log phase in glycerol-alanine-salts medium and inactivated by gamma irradiation. Cells were suspended in PBS buffer containing 8 mM EDTA, proteinase inhibitors, DNase, and RNase, and disrupted by French Press until approximately 90% breakage was obtained. The lysate was centrifuged to pellet the unbroken cells and the cleared supernatant was removed. The protein content of the whole cell lysate was quantified using the BCA protein assay.

**Lot: 62345920****Manufacturing Date: 07MAY2014**

Production and QC testing were performed by Colorado State University (CSU). The CSU documentation for lot 14.CSU93.5.14.WCL is attached.

ATCC<sup>®</sup>, on behalf of BEI Resources, hereby represents and warrants that the material provided under this certificate has been subjected by the contractor to the tests and procedures specified and that the results described, along with any other data provided in this certificate, are true and accurate to the best of ATCC<sup>®</sup>'s knowledge.

ATCC<sup>®</sup> is a trademark of the American Type Culture Collection.

You are authorized to use this product for research use only. It is not intended for human use.



## WORK SHEET FOR WHOLE CELL LYSATE

### General Information

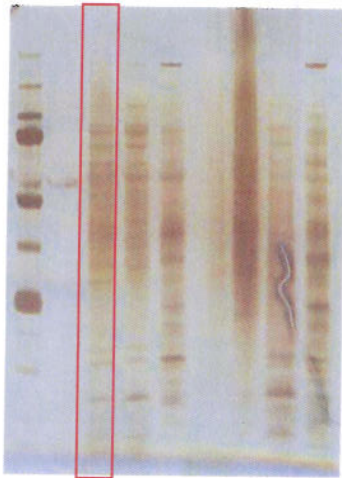
Product Lot Number: 14.CSU93.5.14.WCL  
Species: *M. tuberculosis*  
Strain: CDC1551

### Sonication and Fractionation Information

Starting material (lot #): 14.CSU93.2.4.4.WCg  
Cell amount (wet weight): 76.9g  
SOP #: PP007.3 Notebook pages: Rachel Hazenfield Protein #2 pp. 107-110  
Date of French Press Sonication: 4/28/14 & 5/5/14; Buffer used: PBS-EDTA with protease inhibitor, DNase, and RNase  
Centrifugation Notes Centrifuged at 3,000 rpm for 15 minutes at 4°C  
Date 10 mM ammonium bicarbonate dialysis started: 5/5/14  
date completed: 5/7/14  
Notebook; page(s): Rachel Hazenfield Protein #2 pg. 108

### Quality Control Information

Clarity of product/suspension after dialysis: milky, off-white (normal)  
BCA: 8.838µg /µl Notebook and page(s): Rachel Hazenfield Protein #2 pg. 108  
Total volume: 79.203 ml Total amount of Protein: 700 mg  
Silver Stain Date: 5/14/14 Notebook and page(s): Rachel Hazenfield Protein #1 pg. 110  
QC Gel:



### Aliquot Information:

\*Aliquot information reflects aliquots made at the time of QC. Bulk aliquots will be broken down as needed.

70x 10 mg

Rachel Hazenfield 5/15/14  
(Research Associate) (date)

[Signature] 5/16/14  
(Laboratory Supervisor) (date)