

**Escherichia coli, Strain H53 (Serotype O88:K-:H25)**

**Catalog No. NR-17726**

**Product Description:** *Escherichia coli* (*E. coli*), strain H53 was isolated in 1945 from human urine; it has been typed as an O88:K-:H25 strain.

**Lot<sup>1</sup>: 62573365**

**Manufacturing Date: 01MAY2014**

TEST	SPECIFICATIONS	RESULTS
<b>Phenotypic Analysis</b> Cellular morphology Colony morphologies <sup>2,3</sup>  Motility (wet mount) VITEK <sup>®</sup> 2 Compact (GN Card)	Gram-negative rods Report results  Report results Consistent with <i>E. coli</i>	Gram-negative rods Colony type 1: Circular, low convex, entire, smooth and gray (Figure 1) Colony type 2: Irregular, flat, undulate, smooth and gray (Figure 1) Motile Consistent with <i>E. coli</i>
<b>Genotypic Analysis</b> Sequencing of 16S ribosomal RNA gene (~ 820 base pairs)	Consistent with <i>E. coli</i>	Consistent with <i>E. coli</i> <sup>4</sup>
<b>Viability (post-freeze)<sup>2</sup></b>	Growth	Growth

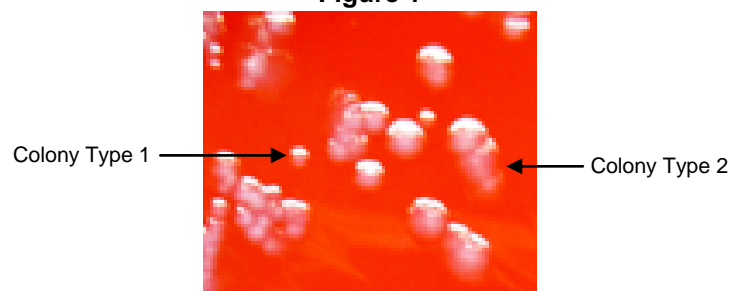
<sup>1</sup>The deposited material was inoculated into Tryptic Soy broth and grown 24 hours at 37°C in an aerobic atmosphere, and the resulting subculture was vialled and frozen. NR-17726 was produced by inoculation of the frozen subculture into Tryptic Soy broth and grown 29 hours under propagation conditions. Broth inoculum was added to Tryptic Soy agar with 5% defibrinated sheep blood kolles which were grown 18 hours under propagation conditions to produce this lot. Purity of this lot was assessed for 7 days on Tryptic Soy agar under propagation conditions.

<sup>2</sup>24 hours on Tryptic Soy agar with 5% defibrinated sheep blood under propagation conditions

<sup>3</sup>Two colony types were observed. Plating of the individual colony types showed that they reverted to a mixed colony type. The 16S ribosomal RNA gene of each colony type was sequenced and found to be consistent with *E. coli*.

<sup>4</sup>Also consistent with *Shigella* species

**Figure 1**



**Date:** 29 JUL 2014

**Signature:**

**Title:**

Technical Manager, BEI Authentication or designee

ATCC<sup>®</sup>, on behalf of BEI Resources, hereby represents and warrants that the material provided under this certificate has been subjected to the tests and procedures specified and that the results described, along with any other data provided in this certificate, are true and accurate to the best of ATCC<sup>®</sup>'s knowledge.

ATCC<sup>®</sup> is a trademark of the American Type Culture Collection.

You are authorized to use this product for research use only. It is not intended for human use.

