

Monoclonal Anti-Shiga-Like Toxin 2 Subunit A, Clone 11E10 (produced *in vitro*)

Catalog No. NR-45117

This reagent is the tangible property of the U.S. Government.

Product Description: Antibody Class: IgG1κ

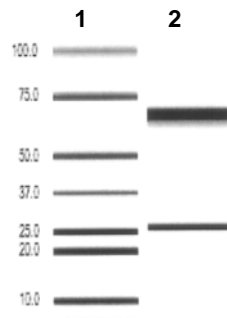
Mouse monoclonal antibody prepared against the A subunit of Shiga-like toxin 2 from *Escherichia coli* was purified from clone 11E10 (ATCC® CRL-1907™) hybridoma supernatant by protein G affinity chromatography.

Lot: 62466437

Manufacturing Date: 12JUN2014

TEST	SPECIFICATIONS	RESULTS
Antibody Class Determination	IgG1κ	IgG1κ
Experion Pro260 Analysis	Correct molecular weight (MW) for heavy and light chains Report results	Correct MW for heavy and light chains (Figure 1) 97.9% pure
Concentration by Spectrophotometer at OD ₂₈₀	Report results	1.0 mg per mL
Sterility	0.22 μm filter-sterilized	0.22 μm filter-sterilized

Figure 1



Lane 1: MW Markers (kDa)
Lane 2: NR-45117

Date: 17 DEC 2014

Signature: *Michael R. Gynther*

Title: Technical Manager, BEI Authentication or designee

ATCC®, on behalf of BEI Resources, hereby represents and warrants that the material provided under this certificate has been subjected to the tests and procedures specified and that the results described, along with any other data provided in this certificate, are true and accurate to the best of ATCC®'s knowledge.

ATCC® is a trademark of the American Type Culture Collection.
You are authorized to use this product for research use only. It is not intended for human use.

