

***Clostridium difficile*, Strain P11**

**Catalog No. NR-32890**

**Product Description:** *Clostridium difficile* (*C. difficile*), strain P11 is a toxigenic strain obtained in 2001 from fecal material of a human patient with a relapsing *C. difficile* infection in western Pennsylvania, USA.

**Lot<sup>1</sup>: 62082906**

**Manufacturing Date: 25OCT2013**

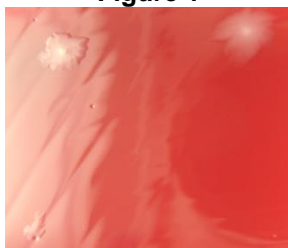
TEST	SPECIFICATIONS	RESULTS
<b>Phenotypic Analysis</b> Cellular morphology Colony morphology <sup>2</sup>  Motility (wet mount) Hemolysis <sup>2</sup> Biochemical tests Remel RapID™ ANA II Panel Esculin hydrolysis Gelatin hydrolysis	Gram-positive rods Report results  Motile Report results  Consistent with <i>C. difficile</i> Positive Positive	Gram-positive rods Irregular, flat, undulate, opaque and gray (Figure 1) Motile Non-hemolytic  Consistent with <i>C. difficile</i> Positive Positive
<b>Genotypic Analysis</b> Sequencing of 16S ribosomal RNA gene (~ 1440 base pairs)	Consistent with <i>C. difficile</i>	Consistent with <i>C. difficile</i>
<b>Purity (post-freeze)<sup>3</sup></b>	Growth consistent with <i>C. difficile</i>	Growth consistent with <i>C. difficile</i>
<b>Viability (post-freeze)<sup>2</sup></b>	Growth	Growth

<sup>1</sup>NR-32890 was produced by inoculation of the deposited material into Modified Reinforced Clostridial medium and incubated for 48 hours at 37°C in an anaerobic atmosphere (< 5% O<sub>2</sub>; Remel™ Pack-Anaero™ R681001). Broth inoculum was added to Tryptic Soy agar with 5% sheep blood kolles which were grown 49 hours at 37°C in an anaerobic atmosphere to produce this lot.

<sup>2</sup>48 hours at 37°C in an anaerobic atmosphere on Tryptic Soy agar with 5% defibrinated sheep blood

<sup>3</sup>Purity of this lot was assessed for 7 days on Tryptic Soy agar with 5% defibrinated sheep blood at 37°C in an anaerobic atmosphere.

**Figure 1**



**Date:** 22 AUG 2014

**Signature:**

**Title:** Technical Manager, BEI Authentication or designee

ATCC®, on behalf of BEI Resources, hereby represents and warrants that the material provided under this certificate has been subjected to the tests and procedures specified and that the results described, along with any other data provided in this certificate, are true and accurate to the best of ATCC®'s knowledge.

ATCC® is a trademark of the American Type Culture Collection. You are authorized to use this product for research use only. It is not intended for human use.

