

***Clostridium difficile*, Strain P24**

Catalog No. NR-32900

Product Description: *Clostridium difficile* (*C. difficile*), strain P24 is a toxigenic strain obtained in 2001 from fecal material of a human patient with a relapsing *C. difficile* infection in western Pennsylvania, USA.

Lot¹: 62108018

Manufacturing Date: 06NOV2013

TEST	SPECIFICATIONS	RESULTS
Phenotypic Analysis Cellular morphology Colony morphology ² Motility (wet mount) Hemolysis ² Biochemical tests Remel RapID™ ANA II Panel Esculin hydrolysis Gelatin hydrolysis	Gram-positive rods Report results Motile Report results Consistent with <i>C. difficile</i> Positive Positive	Gram-positive rods Irregular, flat, lobate, rough and gray (Figure 1) Motile Non-hemolytic Consistent with <i>C. difficile</i> Positive Positive
Genotypic Analysis Sequencing of 16S ribosomal RNA gene (~ 1450 base pairs)	Consistent with <i>C. difficile</i>	Consistent with <i>C. difficile</i> ³
Purity (post-freeze)⁴	Growth consistent with <i>C. difficile</i>	Growth consistent with <i>C. difficile</i>
Viability (post-freeze)²	Growth	Growth

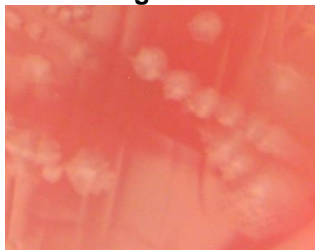
¹NR-32900 was produced by inoculation of the deposited material into Modified Reinforced Clostridial medium and incubated for 71 hours at 37°C in an anaerobic atmosphere (< 5% O₂; Remel™ Pack-Anaero™ R681001). The material from the initial growth was passaged once in Modified Reinforced Clostridial medium at 37°C for 48 hours in an anaerobic atmosphere to produce this lot.

²48 hours at 37°C in an anaerobic atmosphere on Tryptic Soy agar with 5% defibrinated sheep blood

³100% identical to GenBank: AVMA01000026 (*Clostridium difficile*, strain P24)

⁴Purity of this lot was assessed for 7 days on Tryptic Soy agar with 5% defibrinated sheep blood at 37°C in an anaerobic atmosphere.

Figure 1



Date: 22 AUG 2014

Signature:

Title: Technical Manager, BEI Authentication or designee

ATCC®, on behalf of BEI Resources, hereby represents and warrants that the material provided under this certificate has been subjected to the tests and procedures specified and that the results described, along with any other data provided in this certificate, are true and accurate to the best of ATCC®'s knowledge.

ATCC® is a trademark of the American Type Culture Collection.

You are authorized to use this product for research use only. It is not intended for human use.

