

***Salmonella enterica* subsp. *enterica*, Strain 14028s Δ nahR (Serovar Typhimurium)**

Catalog No. NR-40488

Product Description: *Salmonella enterica* (*S. enterica*) subsp. *enterica*, strain 14028s Δ nahR (STM14:0049, STM:0040) (serovar Typhimurium) was derived from strain 14028s. The deletion mutant was produced by creating a PCR product with *nahR* homologous sequences at the 5' and 3' ends of a linear fragment containing a kanamycin resistance cassette. *S. enterica* subsp. *enterica*, strain 14028s was transformed, and insertion of the *kan* cassette was confirmed by PCR. The final non-polar deletions were completed by elimination of the *kan* cassette.

Lot¹: 62782816

Manufacturing Date: 08AUG2014

TEST	SPECIFICATIONS	RESULTS
Phenotypic Analysis Cellular morphology Colony morphology ² Motility (wet mount) Analytical profile index (API [®] 20 E) ³	Gram-negative rod Report results Report results Consistent with <i>Salmonella</i> spp.	Gram-negative rod Circular, low convex, entire, smooth and cream (Figure 1) Motile Consistent with <i>Salmonella</i> spp.
Genotypic Analysis Sequencing of 16S ribosomal RNA gene (~ 860 base pairs) Riboprinter [®] Microbial Characterization System	Consistent with <i>S. enterica</i> Consistent with <i>S. enterica</i>	Consistent with <i>S. enterica</i> subsp. <i>enterica</i> Consistent with <i>S. enterica</i> subsp. <i>enterica</i> serovar Typhimurium
Serogroup Verification	Serogroup B	Serogroup B ^{4,5}
Purity (post-freeze)⁶	Growth consistent with <i>S. enterica</i> subsp. <i>enterica</i>	Growth consistent with <i>S. enterica</i> subsp. <i>enterica</i>
Viability (post-freeze)²	Growth	Growth

¹NR-40488 was produced by inoculation of the deposited material into Luria Bertani (LB) broth (supplemented with 1% Bacto-tryptone, 0.5% yeast extract and 1% sodium chloride) and grown 24 hours in an aerobic atmosphere at 37°C. Broth inoculum was added to kolles which were grown 25 hours at 37°C in an aerobic atmosphere to produce this lot.

²24 hours at 37°C in an aerobic atmosphere on LB agar (supplemented with 1% Bacto-tryptone, 0.5% yeast extract and 1% sodium chloride).

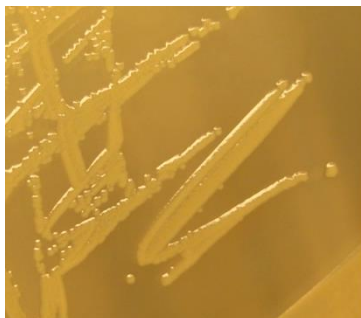
³Additional serological tests are required to determine *Salmonella* species using API[®] 20 E.

⁴No other serogroups were assayed.

⁵Serogroup B contains serovar Typhimurium in addition to other serovars.

⁶Purity of this lot was assessed for 7 days on LB agar (supplemented with 1% Bacto-tryptone, 0.5% yeast extract and 1% sodium chloride).at 37°C in an aerobic atmosphere.

Figure 1



Date: 18 SEP 2014

Signature: 

Title: Technical Manager, BEI Authentication or designee

ATCC[®], on behalf of BEI Resources, hereby represents and warrants that the material provided under this certificate has been subjected to the tests and procedures specified and that the results described, along with any other data provided in this certificate, are true and accurate to the best of ATCC[®]'s knowledge.

ATCC[®] is a trademark of the American Type Culture Collection.

You are authorized to use this product for research use only. It is not intended for human use.

