

Expression Vector Containing the Chitinase Gene Fragment from *Biomphalaria glabrata*, Recombinant in *Escherichia coli*

Catalog No. NR-41862

This reagent is the tangible property of the U.S. Government.

Product Description: NR-41862 is an expression vector (pCR[®]2.1-TOPO[®]) containing a fragment of the chitinase gene from *Biomphalaria glabrata* (*B. glabrata*), transformed into *Escherichia coli* (*E. coli*), strain DH5 α .

Lot^{1,2}: 10032012

Manufacturing Date: 04SEP2012

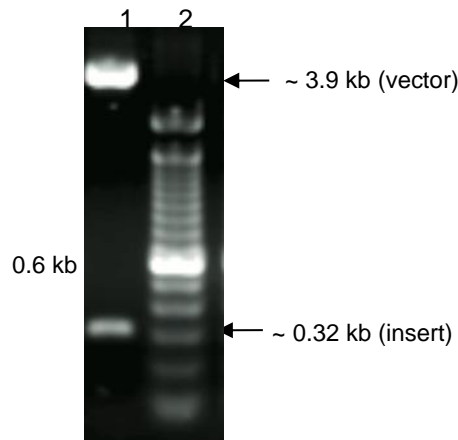
TEST	SPECIFICATIONS	RESULTS
Agarose Gel Electrophoresis Digestion with <i>EcoRI</i> ³	~ 0.32 kb (insert); ~ 3.9 kb (vector)	~ 0.32 kb; ~ 3.9 kb (Figure 1)

¹QC testing was performed by the Biomedical Research Institute, Rockville, MD (NIH-NIAID Contract HHSN2722010000051)

²Plasmid DNA was extracted from *E. coli* culture grown overnight in Luria-Bertani (LB) broth with 100 μ g/mL ampicillin, using a commercially available kit.

³2 μ g of plasmid DNA was digested with *EcoRI* for one hour at 37°C.

Figure 1: Restriction Enzyme Digestion of Chitinase Gene Fragment



Lane 1: 100 bp ladder
Lane 2: 2 μ g of digested vector DNA

Date: 11 SEP 2014

Signature:

Title: Technical Manager, BEI Authentication or designee

ATCC[®], on behalf of BEI Resources, hereby represents and warrants that the material provided under this certificate has been subjected by the contributor to the tests and procedures specified and that the results described, along with any other data provided in this certificate, are true and accurate to the best of ATCC[®]'s knowledge.

ATCC[®] is a trademark of the American Type Culture Collection.
You are authorized to use this product for research use only. It is not intended for human use.

