

**GroES (Gene Rv3418c), Purified Native Protein from *Mycobacterium tuberculosis*, Strain H37Rv**

**Catalog No. NR-14861**

This reagent is the tangible property of the U.S. Government.

**Product Description:** NR-14861 is a preparation of the GroES (Gene Rv3418c) purified native proteins from the culture filtrate of irradiated *Mycobacterium tuberculosis*, strain H37Rv. The culture filtrate proteins were precipitated with 70% ammonium sulfate and applied to a ConA column. The unbound fraction was further resolved by reversed phase HPLC.

**Lot: 61977666**

**Manufacturing Date: 11AUG2014**

Production and QC testing were performed by Colorado State University. The Colorado State University documentation for lot 14.Rv.2.8.11.GroES is attached.

ATCC<sup>®</sup>, on behalf of BEI Resources, hereby represents and warrants that the material provided under this certificate has been subjected by the contractor to the tests and procedures specified and that the results described, along with any other data provided in this certificate, are true and accurate to the best of ATCC<sup>®</sup>'s knowledge.

ATCC<sup>®</sup> is a trademark of the American Type Culture Collection.

You are authorized to use this product for research use only. It is not intended for human use.



WORK SHEET FOR PURIFIED NATIVE PROTEINS

General Information

BEI Catalog Number: NR-14861  
Product Description: GroES (Rv3418c)  
CSU Lot Number: 14.Rv.2 8.11.GroES  
Species: M. tuberculosis  
Strain: H37Rv

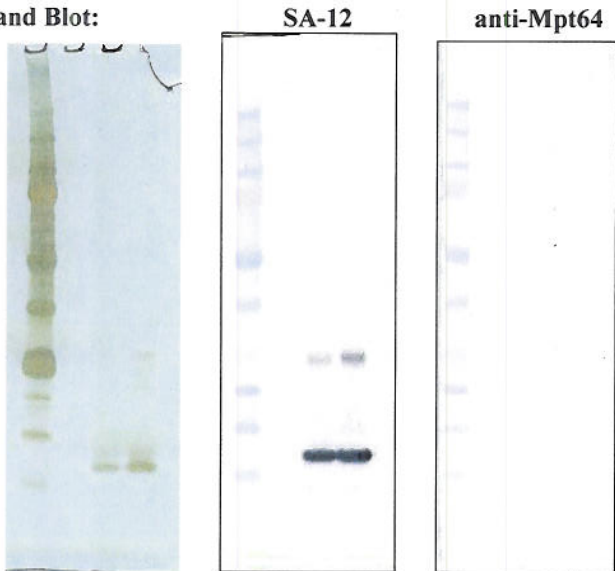
Purification Information

Starting material: ConA Flow Through (117.25 mg)  
Protocol used (SOP #'s): PP035.2  
Date started: 7/16/2014  
Date completed: 8/11/2014  
Notebook; page(s): Starting Material: Rachel Hazenfield, Notebook #2, pg 112-115; Protein Production: Megan Lucas, BEI Production; pg 67-77  
Additional notes (if applicable): Reverse Phase column (C18) column gradient was modified slightly to optimize protein separation. A second, smaller C18 column was used for cleanup of fractions containing Mpt64. A new anti-Mpt64 antibody was used to determine which HPLC fractions could be pooled without contamination. These changes will be included in a new modification of the SOP.

Quality Control Information

Clarity of product/suspension after dialysis: clear  
BCA: 0.748  $\mu\text{g}/\mu\text{l}$  Notebook and page(s): MCL, BEI Production; pg 77  
Total volume: 8.356 ml Total amount of Protein: 6.25 mg  
Silver Stain Date: 8/7/2014 Notebook and page(s): MCL, BEI Production; pg 76  
Western blot Date: 8/7/2014 Antibody used: SA-12 (+) and anti-Mpt64 (-)  
Notebook and page(s): MCL, BEI Production; pg 76  
Mass Spectrometry information/file (if applicable): \_\_\_\_\_

QC Gel and Blot:



Aliquot Information:

12 x 500  $\mu\text{g}$   
1 x 250  $\mu\text{g}$

Megan Lucas  
(Research Associate) 8-11-14  
(date)

[Signature]  
(Laboratory Supervisor) 8/11/14  
(date)