

Peptoniphilus sp., Strain BV3C26

Catalog No. HM-826

Product Description: *Peptoniphilus* sp., strain BV3C26 was isolated from a human vaginal swab.

Lot^{1,2}: 62466443

Manufacturing Date: 18APR2014

TEST	SPECIFICATIONS	RESULTS
Phenotypic Analysis Cellular morphology Colony morphology ³ Motility (wet mount)	Gram-positive cocci Report results Report results	Gram-positive cocci Punctiform (Figure 1) Non-motile
Genotypic Analysis Sequencing of 16S ribosomal RNA gene (~ 820 base pairs)	≥ 99% identical to GenBank: AWXB01000036 (<i>Peptoniphilus</i> sp., strain BV3C26)	≥ 99% identical to GenBank: AWXB01000036 (<i>Peptoniphilus</i> sp., strain BV3C26)
Purity (post-freeze) Anaerobic growth ⁴ Aerobic growth ⁵	Growth consistent with <i>Peptoniphilus</i> sp. No growth	Growth consistent with <i>Peptoniphilus</i> sp. No growth
Viability (post-freeze)³	Growth	Growth

¹Quality control of HMP material is only performed to demonstrate that the material distributed by BEI Resources is identical to the deposited material. It should not be considered a complete characterization of the deposited organism.

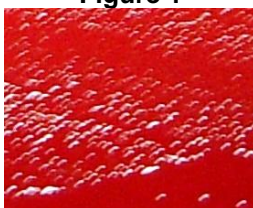
²*Peptoniphilus* sp., strain BV3C26 was deposited by Maria V. Sizova, Ph.D., Department of Biology, Northeastern University, Boston, Massachusetts, USA. HM-826 was produced by inoculation of the deposited material into Modified Reinforced Clostridial broth and incubated for 72 hours at 37°C in an anaerobic atmosphere (< 5% O₂; Remel™ Pack-Anaero™ R681001). The material from the initial growth was passaged once in Modified Reinforced Clostridial broth for 72 hours at 37°C in an anaerobic atmosphere to produce this lot.

³72 hours at 37°C in an anaerobic atmosphere on Tryptic Soy agar with 5% defibrinated sheep blood

⁴Purity of this lot was assessed in an anaerobic atmosphere for 7 days at 37°C on Tryptic Soy agar with 5% defibrinated sheep blood.

⁵Purity of this lot was assessed in an aerobic atmosphere with 5% CO₂ for 72 hours at 37°C on Tryptic Soy agar with 5% defibrinated sheep blood.

Figure 1



Date: 02 APR 2015

Signature:

Title:

Technical Manager, BEI Authentication or designee

ATCC®, on behalf of BEI Resources, hereby represents and warrants that the material provided under this certificate has been subjected to the tests and procedures specified and that the results described, along with any other data provided in this certificate, are true and accurate to the best of ATCC®'s knowledge.

ATCC® is a trademark of the American Type Culture Collection.

You are authorized to use this product for research use only. It is not intended for human use.

