

Genomic DNA from *Campylobacter jejuni* subsp. *jejuni*, Strain TGH 9011

Catalog No. NR-4116
(Derived from ATCC® 43431™)

Product Description: Genomic DNA was isolated from a preparation of *Campylobacter jejuni* (*C. jejuni*) subsp. *jejuni*, strain TGH 9011, serotype O:3, Penner HS:3. Strain TGH 9011 was isolated by Dr. L. Spence from human feces at Toronto General Hospital in Toronto, Ontario, Canada.

Lot¹: 7731470

Manufacturing Date: 29JAN2007

TEST	SPECIFICATIONS	RESULTS
Sequencing of 16S Ribosomal RNA Gene (~ 500 base pairs)	Consistent with <i>C. jejuni</i>	Consistent with <i>C. jejuni</i> ^{2,3}
Agarose Gel Electrophoresis	High molecular weight chromosomal DNA	High molecular weight chromosomal DNA (Figure 1)
Content by PicoGreen® Measurement	4 to 6 µg in 25 to 100 µL per vial	5.6 µg in 48 µL per vial (116.3 µg/mL)
Functional Activity by PCR Amplification 16S ribosomal RNA gene Presence of cytolethal distending factor toxin: <i>cdtA</i> <i>cdtB</i> <i>cdtC</i> Presence of: Hippurate hydrolysis gene (<i>HipO</i>) Tetracycline resistance protein gene (<i>TetO</i>)	~ 1500 base pair amplicon Report results Report results Report results ~ 1180 base pair amplicon Report results	~ 1500 base pair amplicon ~ 165 base pair amplicon No amplicon ~ 555 base pair amplicon ~ 1180 base pair amplicon No amplicon
OD₂₆₀/OD₂₈₀ Ratio	1.7 to 1.9	1.8
Bacterial Inactivation 10% of total yield plated on Tryptic Soy agar with 5% sheep blood ^{4,5}	No viable bacteria detected	No viable bacteria detected

¹The bacterial preparation used for extraction of genomic DNA was produced by resuspension of a freeze dried vial of ATCC® 43431™ (lot 4738669) in Brucella broth. Broth inoculum was added to Tryptic Soy agar with 5% defibrinated sheep blood kolles and incubated at 37°C in a microaerophilic (3–5% O₂ and 5% CO₂) atmosphere for 48 hours. Growth was harvested from the kolles and used to inoculate a second passage on Tryptic Soy agar with 5% defibrinated sheep blood kolles under the same propagation conditions and genomic DNA was extracted using proprietary technology.

²Also consistent with *C. coli*

³Identical to 16S ribosomal RNA gene sequence GenBank: z29326.1 (*C. jejuni* subsp. *jejuni*, strain TGH 9011)

⁴7 days at 37°C in a microaerophilic atmosphere

⁵An extraction procedure was used that has been shown to consistently inactivate 100% of Gram-positive and Gram-negative bacteria.

Date: 18 NOV 2014

Signature:



Title:

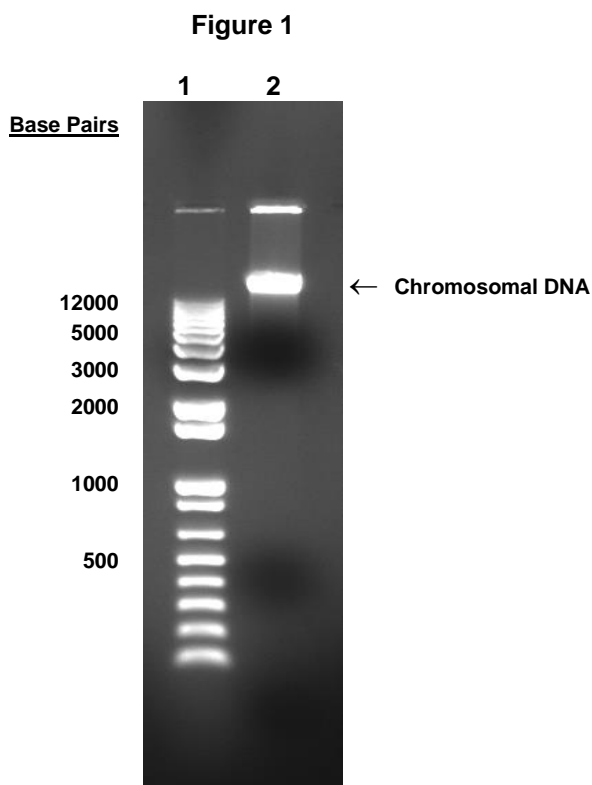
Technical Manager, BEI Authentication or designee

ATCC®, on behalf of BEI Resources, hereby represents and warrants that the material provided under this certificate has been subjected to the tests and procedures specified and that the results described, along with any other data provided in this certificate, are true and accurate to the best of ATCC®'s knowledge.

ATCC® is a trademark of the American Type Culture Collection.

You are authorized to use this product for research use only. It is not intended for human use.





Lane 1: Invitrogen™ TrackIt™ 1 Kb Plus DNA Ladder
Lane 2: 200 ng of NR-4116