

**Genomic DNA from *Campylobacter jejuni* subsp. *jejuni*, Strain MK 104**

**Catalog No. NR-4118**

(Derived from ATCC® 43446™)

**Product Description:** Genomic DNA was isolated from a preparation of *Campylobacter jejuni* (*C. jejuni*) subsp. *jejuni*, MK 104, serotype O:19. Strain MK 104 was isolated by Dr. M. Karmali from human feces at The Hospital for Sick Children in Toronto, Ontario, Canada.

**Lot<sup>1</sup>: 7731472**

**Manufacturing Date: 26JAN2007**

TEST	SPECIFICATIONS	RESULTS
<b>Sequencing of 16S Ribosomal RNA Gene</b> (~ 690 base pairs)	Consistent with <i>C. jejuni</i>	Consistent with <i>C. jejuni</i> <sup>2</sup>
<b>Agarose Gel Electrophoresis</b>	High molecular weight chromosomal DNA	High molecular weight chromosomal DNA (Figure 1)
<b>Content by PicoGreen® Measurement</b>	4 to 6 µg in 25 to 100 µL per vial	5.8 µg in 46 µL per vial (125.1 µg/mL)
<b>Functional Activity by PCR Amplification</b> 16S ribosomal RNA gene Presence of cytolethal distending factor toxin: <i>cdtA</i> <i>cdtB</i> <i>cdtC</i> Presence of: Hippurate hydrolysis gene ( <i>HipO</i> ) Tetracycline resistance protein gene ( <i>TetO</i> )	~ 1500 base pair amplicon Report results Report results Report results ~ 1180 base pair amplicon Report results	~ 1500 base pair amplicon ~ 165 base pair amplicon ~ 495 base pair amplicon ~ 555 base pair amplicon ~ 1180 base pair amplicon No amplicon
<b>OD<sub>260</sub>/OD<sub>280</sub> Ratio</b>	1.7 to 1.9	1.9
<b>Bacterial Inactivation</b> 10% of total yield plated on Tryptic Soy agar with 5% sheep blood <sup>3,4</sup>	No viable bacteria detected	No viable bacteria detected

<sup>1</sup>The bacterial preparation used for extraction of genomic DNA was produced by Brucella broth culture of the NR-4084 lot 7731419. Broth inoculum was added to Tryptic Soy agar with 5% defibrinated sheep blood kolles and incubated at 37°C in a microaerophilic (3–5% O<sub>2</sub> and 5% CO<sub>2</sub>) atmosphere for 25 hours. Genomic DNA was extracted using proprietary technology.

<sup>2</sup>Also consistent with *C. coli*

<sup>3</sup>7 days at 37°C in a microaerophilic atmosphere

<sup>4</sup>An extraction procedure was used that has been shown to consistently inactivate 100% of Gram-positive and Gram-negative bacteria.

**Date:** 18 NOV 2014

**Signature:** 

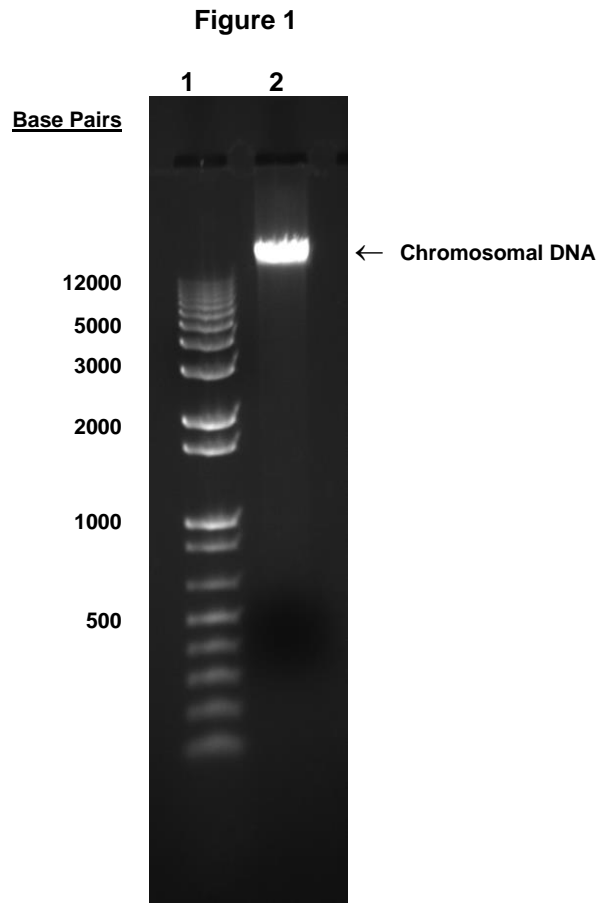
**Title:** Technical Manager, BEI Authentication or designee

ATCC®, on behalf of BEI Resources, hereby represents and warrants that the material provided under this certificate has been subjected to the tests and procedures specified and that the results described, along with any other data provided in this certificate, are true and accurate to the best of ATCC®'s knowledge.

ATCC® is a trademark of the American Type Culture Collection.

You are authorized to use this product for research use only. It is not intended for human use.





Lane 1: Invitrogen™ TrackIt™ 1 Kb Plus DNA Ladder  
Lane 2: 200 ng of NR-4118