

**Oligo(dT) Generated Complementary DNA from *Schistosoma japonicum*, Philippine Strain, Eggs**

**Catalog No. NR-48862**

This reagent is the tangible property of the U.S. Government.

**Product Description:** Complementary DNA (cDNA) was synthesized from total RNA extracted from *Schistosoma japonicum* (*S. japonicum*), Philippine strain, eggs, using the ProtoScript® II First Strand cDNA Synthesis Kit (New England BioLabs®). The kit provides an anchored oligo-[d(T)<sub>23</sub>VN] primer which forces the primer to anneal to the beginning of the poly(A) tail increasing the yield of 3' end poly(A)-primed cDNAs.

**Lot<sup>1,2</sup>: 62854896**

**Manufacturing Date: 24JUN2014**

TEST	SPECIFICATIONS	RESULTS
Concentration	Report results	1.0 µg in 20 µL per vial (0.05 µg/µL)
OD <sub>260</sub> /OD <sub>280</sub> Ratio	1.70 to 2.00	1.80
Qualification by RT-PCR Amplification of 28S ribosomal RNA gene <sup>3</sup>	~ 290 base pair amplicon	~ 290 base pair amplicon (Figure 1)

<sup>1</sup>QC testing was performed by the Biomedical Research Institute, Rockville, MD (NIH-NIAID Contract HHSN2722010000051)

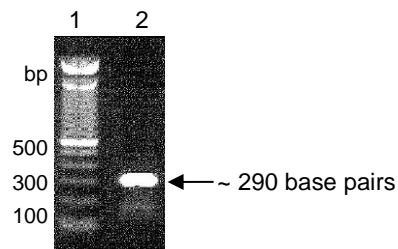
<sup>2</sup>cDNA was synthesized from total RNA by ProtoScript® II First Strand cDNA Synthesis Kit (New England BioLabs®, Inc.) according to the manufacturer's instructions, using Oligo d(T)<sub>23</sub>VN.

<sup>3</sup>Primers were designed to amplify the nucleotide region 39 to 326 of *Schistosoma mansoni* (*S. mansoni*) 28S ribosomal RNA gene (GenBank: Z46503.1). Cross-amplification of the 28S gene from other *Schistosoma* species has been observed.

**Figure 1: Amplification of 28S Ribosomal RNA Gene for Qualification by RT-PCR**

Lane 1: 100 base pair ladder

Lane 2: 290 base pair amplicon from *S. mansoni* 28S ribosomal RNA gene



**Date:** 20 JAN 2016

**Signature:**

BEI Resources Authentication

ATCC®, on behalf of BEI Resources, hereby represents and warrants that the material provided under this certificate has been subjected by the contributor to the tests and procedures specified and that the results described, along with any other data provided in this certificate, are true and accurate to the best of ATCC®'s knowledge.

ATCC® is a trademark of the American Type Culture Collection.

You are authorized to use this product for research use only. It is not intended for human use.

