

***Klebsiella pneumoniae*, Strain BIDMC 2A**

Catalog No. NR-41916

Product Description: *Klebsiella pneumoniae* (*K. pneumoniae*), strain BIDMC 2A was isolated in 2010 from a blood culture in Boston, Massachusetts, USA.

Lot¹: 62907100

Manufacturing Date: 11SEP2014

TEST	SPECIFICATIONS	RESULTS
Phenotypic Analysis Cellular morphology Colony morphologies ^{2,3} Motility (wet mount) VITEK [®] MS (MALDI-TOF)	Gram-negative bacilli Report results Report results Consistent with <i>K. pneumoniae</i>	Gram-negative bacilli Colony type 1: Circular, convex, entire, smooth and cream (Figure 1) Colony type 2: Circular, low convex, entire, smooth, translucent and cream (Figure 1) Non-motile Consistent with <i>K. pneumoniae</i>
Genotypic Analysis Sequencing of 16S ribosomal RNA gene (~ 1480 base pairs) ³ Riboprinter [®] Microbial Characterization System	Consistent with <i>K. pneumoniae</i> Consistent with <i>K. pneumoniae</i>	Consistent with <i>K. pneumoniae</i> Consistent with <i>K. pneumoniae</i>
Purity (post-freeze)⁴	Consistent with <i>K. pneumoniae</i>	Consistent with <i>K. pneumoniae</i>
Viability (post-freeze)²	Growth	Growth

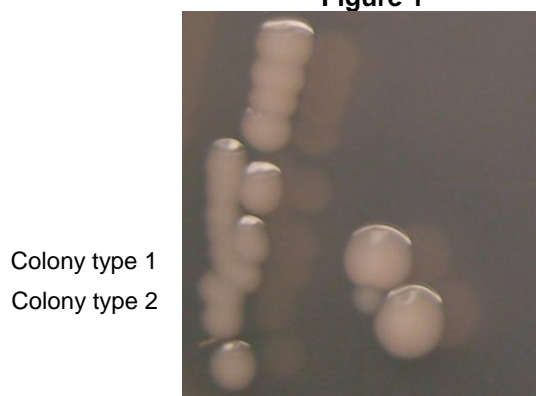
¹*K. pneumoniae*, strain BIDMC 2A was deposited by Andrew B. Onderdonk, Director, Clinical Microbiology, Pathology, Brigham and Women's Hospital, Boston, Massachusetts, USA. NR-41916 was produced by inoculation of the deposited material into Nutrient broth and incubated for 22 hours at 37°C in an aerobic atmosphere. Broth inoculum was added to Nutrient agar kolles which were grown 24 hours at 37°C in an aerobic atmosphere to produce this lot.

²27 hours at 37°C in an aerobic atmosphere on Nutrient agar.

³Two colony types were observed. Plating of the individual colony types showed that they did not revert to a single colony type. The 16S ribosomal RNA gene of each colony type was sequenced and found to be consistent with the other colony type and with *K. pneumoniae*.

⁴Purity of this lot was assessed for 7 days at 37°C in an aerobic atmosphere on Nutrient agar.

Figure 1



Certificate of Analysis for NR-41916

Date: 11 DEC 2014

Signature: 

Title: Technical Manager, BEI Authentication or designee

ATCC[®], on behalf of BEI Resources, hereby represents and warrants that the material provided under this certificate has been subjected to the tests and procedures specified and that the results described, along with any other data provided in this certificate, are true and accurate to the best of ATCC[®]'s knowledge.

ATCC[®] is a trademark of the American Type Culture Collection.

You are authorized to use this product for research use only. It is not intended for human use.

