

PstS1 (Gene Rv0934, Non-Acylated), Purified Native Protein from *Mycobacterium tuberculosis*, Strain H37Rv**Catalog No. NR-14859**

This reagent is the tangible property of the U.S. Government.

Product Description: NR-14859 is a preparation of native protein, PstS1 (Gene Rv0937, non-acylated), purified from the culture filtrate of *Mycobacterium tuberculosis*, strain H37Rv. PstS1 was precipitated by ammonium sulfate, applied to ConA and phenyl sepharose columns, and eluted using a gradient of decreasing ammonium sulfate. Fractions containing PstS1 were pooled and dialyzed.

Note: The cell wall-associated and culture filtrate forms of PstS1 seem to differ in their hydrophobic characteristics, however a chemical difference between the two forms has not been determined.

Lot: 62325996**Manufacturing Date: 15OCT2014**

Production and QC testing were performed by Colorado State University (CSU). The CSU documentation for lot 14.Rv.2.10.15.38kDa is attached.

ATCC[®], on behalf of BEI Resources, hereby represents and warrants that the material provided under this certificate has been subjected by the contractor to the tests and procedures specified and that the results described, along with any other data provided in this certificate, are true and accurate to the best of ATCC[®]'s knowledge.

ATCC[®] is a trademark of the American Type Culture Collection.

You are authorized to use this product for research use only. It is not intended for human use.



WORK SHEET FOR PURIFIED NATIVE PROTEINS

General Information

BEI Catalog Number: NR-14859
Product Description: PstS1, 38kDa, PhoS1
CSU Lot Number: 14.Rv.2.10.15.38kDa
Species: M. tuberculosis
Strain: H37Rv

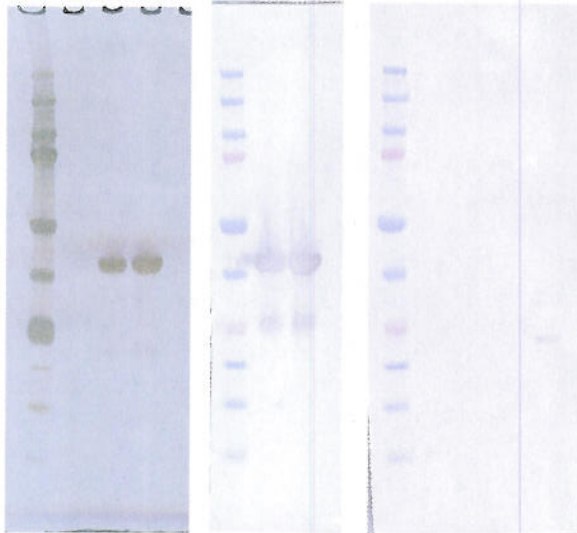
Purification Information

Starting material: 70% cut (105 mg), 38kDa clean-up pool (2.3 mg)
Protocol used (SOP #'s): Modified PP024.6 (see notes)
Date started: 9/26/2014
Date completed: 10/15/2014
Notebook; page(s): Starting Material: (70% cut) Megan Lucas, BEI Production, pg 49-50 & (38kDa pool) Rachel Hazenfield, Notebook #2, pg 112-117; Protein Production: Megan Lucas, BEI Production; pg 81-88
Additional notes (if applicable): ConA column was eluted using a gradient of D-mannose instead of methyl-alpha-D-mannopyranoside. The 38kDa pool was added to the clean-up prior to the phenyl sepharose column.

Quality Control Information

Clarity of product/suspension after dialysis: clear
BCA: 0.418 µg/µl Notebook and page(s): MCL, BEI Production; pg 87
Total Protein: 1.075mg
Silver Stain Date: 10/15/2014 Notebook and page(s): MCL, BEI Production; pg 88
Western blot Date: 10/15/2014 Antibody used: IT-23 (+) and anti-Rv1411c (-)
Notebook and page(s): MCL, BEI Production; pg 88
Mass Spectrometry information/file (if applicable): _____

QC Gel and Blot: IT-23 anti-Rv1411c



Lane 1: Molecular Weight Marker
Lane 2: 1 µg Protein
Lane 3: 2 µg Protein
Lane 4: CFP positive control
(anti-Rv1411c blot only)

Aliquot Information:

4 x 250 µg
1 x 75 µg

Megan Lucas 10-15-14
(Research Associate) (date)

Rachel Hazenfield 10/15/14
(Laboratory Supervisor) (date)