

Certificate of Analysis for NR-19172

Streptococcus pneumoniae, Strain GA47562

Catalog No. NR-19172

Product Description: *Streptococcus pneumoniae* (*S. pneumoniae*), strain GA47562 was isolated in 2006 from the blood of a patient with pneumonia in Georgia, USA. *S. pneumoniae*, strain GA47562 was deposited as a member of serotype 11A.

Lot¹: 62743352

Manufacturing Date: 09JUL2014

TEST	SPECIFICATIONS	RESULTS
Phenotypic Analysis Cellular morphology Colony morphology ² Hemolysis on blood agar ² Motility (wet mount) Catalase VITEK [®] MS (MALDI-TOF)	Gram-positive cocci Report results α-hemolytic Report results Negative Consistent with <i>S. pneumoniae</i>	Gram-positive cocci Circular, umbilicate, entire, mucoid and gray (Figure 1) α-hemolytic Non-motile Negative Consistent with <i>S. pneumoniae</i>
Antibiotic Susceptibility Profile³ Benzylpenicillin ⁴ Ciprofloxacin ⁵ Levofloxacin ⁴ Gatifloxacin ⁵ Ofloxacin ⁴ Erythromycin ⁴ Telithromycin ⁴ Clindamycin ⁵ Quinupristin/dalfopristin ⁵ Linezolid ⁴ Vancomycin ⁴ Tetracycline ⁴ Rifampicin ⁵ Trimethoprim/sulfamethoxazole ⁴ Amoxicillin ⁴ Meropenem ⁴ Cefotaxime ⁴ Cefuroxime ⁵ Cefaclor ⁵ Ceftriaxone ⁴ Chloramphenicol ⁴	Sensitive Report results Sensitive Report results Report results Resistant Sensitive Sensitive Sensitive Sensitive Sensitive Sensitive Report results Sensitive Sensitive Sensitive Sensitive Report results Sensitive Sensitive	Sensitive (≤ 0.06 µg/mL) Sensitive (1.0 µg/mL) Sensitive (1 µg/mL) Sensitive (0.25 µg/mL) Sensitive (2 µg/mL) Resistant (≥ 1 µg/mL) Sensitive (0.5 µg/mL) Sensitive (0.19 µg/mL) Sensitive (0.38 µg/mL) Sensitive (≤ 2 µg/mL) Sensitive (≤ 1 µg/mL) Sensitive (≤ 1 µg/mL) Sensitive (0.047 µg/mL) Sensitive (≤ 10 µg/mL) Sensitive (≤ 0.06 µg/mL) Sensitive (≤ 0.06 µg/mL) Sensitive (0.032 µg/mL) Sensitive (0.75 µg/mL) Sensitive (≤ 0.06 µg/mL) Sensitive (≤ 2 µg/mL)
Genotypic Analysis Sequencing of 16S ribosomal RNA gene (~ 1470 base pairs) Riboprinter [®] Microbial Characterization System	Consistent with <i>S. pneumoniae</i> Consistent with <i>S. pneumoniae</i>	Consistent with <i>S. pneumoniae</i> ⁶ Consistent with <i>S. pneumoniae</i>
Purity (post-freeze)⁷	Consistent with <i>S. pneumoniae</i>	Consistent with <i>S. pneumoniae</i>
Viability (post-freeze)²	Growth	Growth

¹ *S. pneumoniae*, strain GA47562 (also referred to as SPAR100) was deposited by Scott T. Chancey, Ph.D., Division of Infectious Diseases, Department of Medicine, Emory University, Atlanta, Georgia, USA. NR-19172 was produced by inoculation of the deposited material into Todd-Hewitt broth and incubated for 26 hours at 37°C in an aerobic atmosphere with 5% CO₂. Broth inoculum was added to Tryptic Soy agar with 5% defibrinated sheep blood kolles which were grown 23 hours at 37°C in an aerobic atmosphere with 5% CO₂ to produce this lot.

² 23 hours at 37°C in an aerobic atmosphere with 5% CO₂ on Tryptic Soy agar with 5% defibrinated sheep blood

Certificate of Analysis for NR-19172

³Minimum Inhibitory Concentration (MIC); MIC Interpretation Guideline: CLSI M100-S22 (2012)

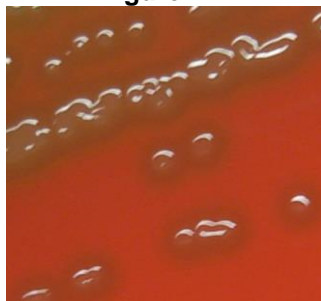
⁴Tested by VITEK[®] AST-GP74 card (VITEK[®] 2, version 5.04)

⁵Tested by bioMérieux E-test[®]: cefuroxime (catalog number 506958), ciprofloxacin (412310), clindamycin (412314), cefaclor (504550), gatifloxacin (530250), rifampicin (412449) and quinupristin/dalfopristin (528750)

⁶100% identical to *S. pneumoniae*, strain GA47562 (GenBank: ALCY01000009.1)

⁷Purity of this lot was assessed for 7 days on Tryptic Soy agar with 5% defibrinated sheep blood at 37°C in an aerobic atmosphere with 5% CO₂.

Figure 1



Date: 29 DEC 2014

Signature:

A handwritten signature in black ink, appearing to read 'D. L. C. orch', written over a white background.

Title: Technical Manager, BEI Authentication or designee

ATCC[®], on behalf of BEI Resources, hereby represents and warrants that the material provided under this certificate has been subjected to the tests and procedures specified and that the results described, along with any other data provided in this certificate, are true and accurate to the best of ATCC[®]'s knowledge.

ATCC[®] is a trademark of the American Type Culture Collection.

You are authorized to use this product for research use only. It is not intended for human use.

