

***Streptococcus pneumoniae*, Strain NP112**

Catalog No. NR-19213

Product Description: *Streptococcus pneumoniae* (*S. pneumoniae*), strain NP112 was isolated in 1995 from the nasopharynx of a healthy human in Georgia, USA. *S. pneumoniae*, strain NP112 was deposited as a member of serotype 06B.

Lot¹: 62743444

Manufacturing Date: 09JUL2014

TEST	SPECIFICATIONS	RESULTS
Phenotypic Analysis Cellular morphology Colony morphology ² Hemolysis on blood agar ² Motility (wet mount) Catalase VITEK [®] MS (MALDI-TOF)	Gram-positive cocci Report results α-hemolytic Report results Negative Consistent with <i>S. pneumoniae</i>	Gram-positive cocci Circular, umbilicate, entire, mucoid and gray (Figure 1) α-hemolytic Non-motile Negative Consistent with <i>S. pneumoniae</i>
Genotypic Analysis Sequencing of 16S ribosomal RNA gene (~ 1460 base pairs) Riboprinter [®] Microbial Characterization System	Consistent with <i>S. pneumoniae</i> Consistent with <i>S. pneumoniae</i>	Consistent with <i>S. pneumoniae</i> ³ Consistent with <i>S. pneumoniae</i>
Purity (post-freeze)⁴	Consistent with <i>S. pneumoniae</i>	Consistent with <i>S. pneumoniae</i>
Viability (post-freeze)²	Growth	Growth

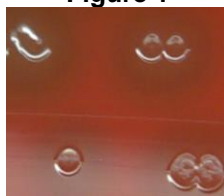
¹*S. pneumoniae*, strain NP112 (also referred to as SPAR141) was deposited by Scott T. Chancey, Ph.D., Division of Infectious Diseases, Department of Medicine, Emory University, Atlanta, Georgia, USA. NR-19213 was produced by inoculation of the deposited material into Todd-Hewitt broth and incubated for 26 hours at 37°C in an aerobic atmosphere with 5% CO₂. Broth inoculum was added to Tryptic Soy agar with 5% defibrinated sheep blood kolles which were grown 23 hours at 37°C in an aerobic atmosphere with 5% CO₂ to produce this lot.

²23 hours at 37°C in an aerobic atmosphere with 5% CO₂ on Tryptic Soy agar with 5% defibrinated sheep blood

³100% identical to *S. pneumoniae*, strain NP112 (GenBank: AGQF01000008.1)

⁴Purity of this lot was assessed for 7 days on Tryptic Soy agar with 5% defibrinated sheep blood at 37°C in an aerobic atmosphere with 5% CO₂.

Figure 1



Date: 29 DEC 2014

Signature:

Title: Technical Manager, BEI Authentication or designee

ATCC[®], on behalf of BEI Resources, hereby represents and warrants that the material provided under this certificate has been subjected to the tests and procedures specified and that the results described, along with any other data provided in this certificate, are true and accurate to the best of ATCC[®]'s knowledge.

ATCC[®] is a trademark of the American Type Culture Collection. You are authorized to use this product for research use only. It is not intended for human use.

