

**Coli Surface Protein 6 (CS6) from Enterotoxigenic *Escherichia coli***

**Catalog No. NR-49114**

This reagent is the property of the U.S. Government.

**Product Description:** NR-49114 is a preparation of coli surface protein 6 (CS6) purified from enterotoxigenic *Escherichia coli* (*E. coli*) (ETEC). CS6 was purified from *E. coli*, strain M346, grown in yeast extract broth in a fermenter under cGMP conditions in February 2002. The protein was purified from the culture supernatant by tangential flow filtration and stored as a bulk preparation, at approximately -80°C, until it was vialled.

**Lot<sup>1</sup>: 03242014-1**

**Manufacturing Date: 22FEB2002**

TEST	SPECIFICATIONS	RESULTS
Appearance	Report results	Clear
SDS-PAGE (GelCode <sup>®</sup> Blue Stain Reagent)	15 kDa band represents > 95% of total staining intensity above background	15 kDa band represents > 95% of total staining intensity above background (Figure 1)
Confirmation of Identity by Western Blot <sup>2</sup> CS6 (NR-49114)	Reactive	Reactive (Figure 2)
Concentration by Bicinchoninic Acid Protein Assay	Report results	1.0 mg/mL
Endotoxin Content <sup>3</sup>	Report results	0.3 EU/µg protein
Sterility	0.22 µm filter sterilized	0.22 µm filter sterilized
Post-Purification Viability <sup>4</sup>	No growth	No growth

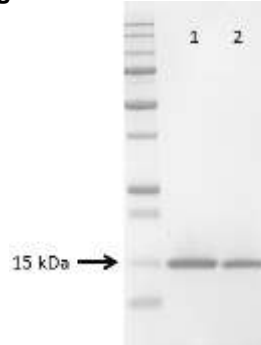
<sup>1</sup>Production and quality control completed by Department of Subunit Enteric Vaccines and Immunology (SEVI), Bacterial Diseases Branch, Walter Reed Army Institute of Research, Silver Spring, Maryland, USA. The bulk material was thawed and vialled 24MAR2014. Quality control testing was completed at the time of vialing.

<sup>2</sup>Using rabbit anti-CS6 serum

<sup>3</sup>Endosafe<sup>®</sup> LAL Assay from Charles River

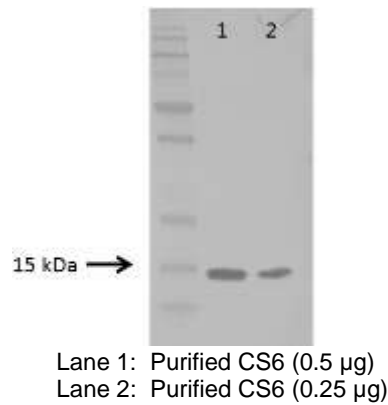
<sup>4</sup>Presence of bacteria was tested by plating 100 µL of purified protein onto a Tryptic Soy agar plate which was incubated in an aerobic atmosphere at 37°C for 24 hours, in triplicate.

**Figure 1 — SDS-PAGE of CS6**



Lane 1: Purified CS6 (5 µg)  
Lane 2: Purified CS6 (2.5 µg)

Figure 2 — Western Blot of CS6



Date: 16 JAN 2015

Signature:

Title: Technical Manager, BEI Authentication or designee

ATCC<sup>®</sup>, on behalf of BEI Resources, hereby represents and warrants that the material provided under this certificate has been subjected by the contractor to the tests and procedures specified and that the results described, along with any other data provided in this certificate, are true and accurate to the best of ATCC<sup>®</sup>'s knowledge.

ATCC<sup>®</sup> is a trademark of the American Type Culture Collection.

You are authorized to use this product for research use only. It is not intended for human use.

