

**Polyclonal Anti-*Mycobacterium tuberculosis*, Cell Wall (CW) (antiserum, Rabbit)****Catalog No. NR-44075**

This reagent is the tangible property of the U.S. Government.

**Product Description:**

Antibody Designation:  $\alpha$ -CW

Polyclonal antiserum to the cell wall (CW) of *Mycobacterium tuberculosis*, strain H37Rv was produced in rabbits. The antiserum is reported to be active in western blot assays.

**Lot: 61994080****Manufacturing Date: 16MAY2014**

Production and QC testing were performed by Colorado State University (CSU). The CSU documentation for lot 14.Anti-CW.3.5.rp is attached.

ATCC<sup>®</sup>, on behalf of BEI Resources, hereby represents and warrants that the material provided under this certificate has been subjected by the contractor to the tests and procedures specified and that the results described, along with any other data provided in this certificate, are true and accurate to the best of ATCC<sup>®</sup>'s knowledge.

ATCC<sup>®</sup> is a trademark of the American Type Culture Collection.

You are authorized to use this product for research use only. It is not intended for human use.



## TB Contract Antibody QC Sheet

### General Information:

Product: anti-CW  
Lot Number: 14.Anti-CW.3.5.rp  
Species: *Mycobacterium tuberculosis*  
Strain: H37Rv  
Type: Rabbit Sera

### Production Information:

Cell Line: \_\_\_\_\_ SOP#: \_\_\_\_\_ Notebook/pp: \_\_\_\_\_  
Amount of CS Harvested: \_\_\_\_\_ Clarity: clear  
IgG Purification: \_\_\_\_\_ SOP#: \_\_\_\_\_ Notebook/pp: \_\_\_\_\_, \_\_\_\_\_

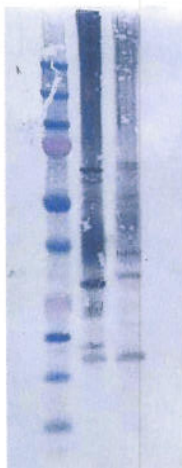
### QC Information:

Filtered with 0.2  $\mu$ m PES filter  
Tested Against: Delipidated CW, WCL SOP#: AB102  
Notebook/pp: Keri Wright, Antibody Notebook #3 Y3/Y4 pAb, pgs , 48-72  
Titer: 1:1000 Western blot: X ELISA: \_\_\_\_\_

### Special Instructions:

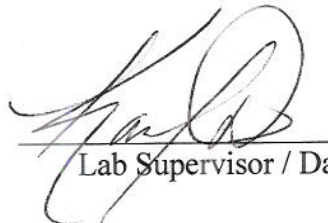
#### QC Western blot:

1. Protein Standard
2. 5 ug Delipidated CW
3. 5 ug WCL



**Aliquot Information:** 100 x 0.25 ml, 30 x 0.25 ml, 1 x 10 ml & 1 x 5 ml bulk aliquots  
\*Aliquot information reflects aliquots made at the time of QC. Bulk aliquots will be broken down as needed.

  
Research Associate / Date 8/11/14

  
Lab Supervisor / Date 8/12/14