

Staphylococcus aureus, Strain HT 20020141

Catalog No. NR-46029

Product Description: *Staphylococcus aureus* (*S. aureus*), strain HT 20020141 was isolated in 2002 from the bloodstream of a 1-month-old male with bacteremia in France. *S. aureus*, strain HT 20020141 is a clinically associated methicillin-sensitive *S. aureus* (MSSA) strain.

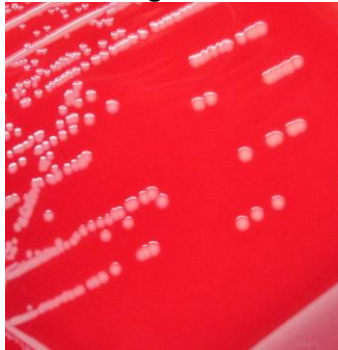
Lot¹: 63007601

Manufacturing Date: 22OCT2014

| TEST | SPECIFICATIONS | RESULTS |
|--|---|---|
| Phenotypic Analysis Cellular morphology Colony morphology ² Motility (wet mount) Hemolysis ² Biochemical Analysis Catalase Coagulase ³ VITEK [®] 2 Compact (GP card) | Gram-positive cocci Report results Report results Report results Positive Report results Consistent with <i>S. aureus</i> | Gram-positive cocci Circular, low convex, entire, smooth and cream (Figure 1) Non-motile β-hemolytic Positive Positive Consistent with <i>S. aureus</i> |
| Antibiotic Susceptibility Profile VITEK [®] (AST-GP71 card) ⁴ Beta-lactamase ⁵ Cefoxitin screen Benzylpenicillin Oxacillin Gentamicin Ciprofloxacin Levofloxin Moxifloxacin Clindamycin (inducible resistance) Erythromycin Clindamycin Quinupristin/dalfopristin Linezolid Daptomycin Vancomycin Minocycline Tetracycline Tigecycline Nitrofurantoin Rifampicin Trimethoprim/sulfamethoxazole Etest [®] antibiotic test strips ⁷ Chloramphenicol ⁸ Teicoplanin ⁸ | Report results Report results Report results Sensitive Sensitive Sensitive Report results Report results Report results Report results Report results Sensitive Sensitive Report results Sensitive Sensitive Report results Report results Report results Report results Sensitive Report results Sensitive | Positive Negative Resistant (≥ 0.5 µg/mL) Sensitive (≤ 0.25 µg/mL) Sensitive (≤ 0.5 µg/mL) Sensitive (≤ 0.5 µg/mL) Sensitive (≤ 0.12 µg/mL) Sensitive (≤ 0.25 µg/mL) Negative Sensitive (≤ 0.25 µg/mL) ⁶ Sensitive (≤ 0.25 µg/mL) Sensitive (= 0.5 µg/mL) Sensitive (= 2 µg/mL) Sensitive (= 0.5 µg/mL) Sensitive (= 1 µg/mL) Sensitive (≤ 0.5 µg/mL) Sensitive (≤ 1 µg/mL) Sensitive (≤ 0.12 µg/mL) Sensitive (≤ 16 µg/mL) Sensitive (≤ 0.5 µg/mL) Sensitive (≤ 10 µg/mL) Sensitive (= 4 µg/mL) Sensitive (= 1 µg/mL) |
| Genotypic Analysis Sequencing of 16S ribosomal RNA gene (~ 1490 base pairs) | Consistent with <i>S. aureus</i> | Consistent with <i>S. aureus</i> |
| Purity (post-freeze)⁹ | Growth consistent with <i>S. aureus</i> | Growth consistent with <i>S. aureus</i> |
| Viability (post-freeze)² | Growth | Growth |

- ¹*S. aureus*, strain HT 20020141 was deposited to BEI Resources as part of the NARSA collection. NR-46029 was produced by inoculation of the deposited material into Tryptic Soy broth and grown 29 hours at 37°C in an aerobic atmosphere. Broth inoculum was added to Tryptic Soy agar with 5% defibrinated sheep blood kolles which were grown 22 hours at 37°C in an aerobic atmosphere to produce this lot.
- ²20 hours at 37°C in an aerobic atmosphere on Tryptic Soy agar with 5% defibrinated sheep blood
- ³4 hours at 37°C in rabbit serum with 0.15% EDTA (Coagulase Plasma BBL™ 240827)
- ⁴Minimum Inhibitory Concentration (MIC); MIC Interpretation Guideline: CLSI M100-S22 (2012)
- ⁵The production of beta-lactamase was detected using a Cefinase™ Paper Disc (BBL™ 231650).
- ⁶*S. aureus*, strain HT 20020141 was deposited as having an intermediate susceptibility to erythromycin. Antibiotic susceptibility testing performed in duplicate identified *S. aureus*, strain HT 20020141 as sensitive to erythromycin.
- ⁷24 hours at 37°C in an aerobic atmosphere on Mueller Hinton agar
- ⁸For both chloramphenicol (bioMérieux Etest® 412308) and teicoplanin (bioMérieux Etest® 412459), a MIC ≤ 8 µg/mL is sensitive, a MIC = 16 µg/mL is intermediate and a MIC ≥ 32 µg/mL is resistant.
- ⁹Purity of this lot was assessed for 7 days on Tryptic Soy agar with 5% defibrinated sheep blood at 37°C in an aerobic atmosphere.

Figure 1



Date: 30 JAN 2015

Signature:

Title: Technical Manager, BEI Authentication or designee

ATCC®, on behalf of BEI Resources, hereby represents and warrants that the material provided under this certificate has been subjected to the tests and procedures specified and that the results described, along with any other data provided in this certificate, are true and accurate to the best of ATCC®'s knowledge.

ATCC® is a trademark of the American Type Culture Collection.

You are authorized to use this product for research use only. It is not intended for human use.

