

## Genomic DNA from *Salmonella enterica* subsp. *enterica*, Strain LT2

**Catalog No. NR-4218**

**Product Description:** Genomic DNA was isolated from a preparation of *Salmonella enterica* (*S. enterica*) subsp. *enterica*, strain LT2, serovar Typhimurium. Serovar Typhimurium causes a typhoid-like disease in mouse and gastroenteritis in humans.

**Lot<sup>1</sup>: 57689518**

**Manufacturing Date: 13SEP2007**

TEST	SPECIFICATIONS	RESULTS
<b>Sequencing of 16S Ribosomal RNA Gene (1325 bp)</b>	Consistent with <i>S. enterica</i> subsp. <i>enterica</i>	Consistent with <i>S. enterica</i> subsp. <i>enterica</i>
<b>Agarose Gel Electrophoresis</b>	High molecular weight chromosomal DNA	High molecular weight chromosomal DNA (Figure 1)
<b>Concentration by PicoGreen<sup>®</sup> Measurement</b>	4 to 6 µg in 25 to 100 µL per vial	5.5 µg in 34 µL per vial (162 µg/mL)
<b>Functional Activity by PCR Amplification</b> 16S ribosomal RNA gene	~ 1500 bp amplicon	~ 1500 bp amplicon
<b>OD<sub>260</sub>/OD<sub>280</sub> Ratio</b>	1.7 to 1.9	1.9
<b>Bacterial Inactivation</b> 10% of total yield plated on Tryptic Soy Agar <sup>2,3</sup>	No viable bacteria detected	No viable bacteria detected

<sup>1</sup>The bacterial preparation used for extraction of genomic DNA was produced by inoculation of BEI Resources NR-174 (Lot: 3824588) into Tryptic Soy Broth. After incubation for 24 hours at 37°C, genomic DNA was extracted using proprietary technology.

<sup>2</sup>7 days at 37°C in an aerobic atmosphere.

<sup>3</sup>An extraction procedure was used that has been shown to consistently inactivate 100% of Gram-negative bacteria.

**Date:** 20 MAR 2008

**Signature:** Signature on File

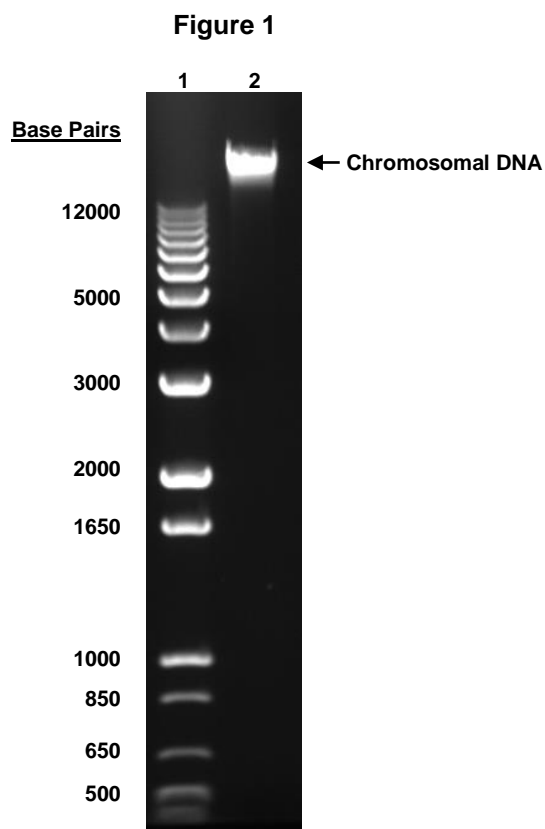
**Title:** Technical Manager, BEI Authentication or designee

ATCC<sup>®</sup>, on behalf of BEI Resources, hereby represents and warrants that the material provided under this certificate has been subjected to the tests and procedures specified and that the results described, along with any other data provided in this certificate, are true and accurate to the best of ATCC<sup>®</sup>'s knowledge.

ATCC<sup>®</sup> is a trademark of the American Type Culture Collection.

You are authorized to use this product for research use only. It is not intended for human use.





Lane 1: Invitrogen™ 1 Kb Plus DNA Ladder™  
Lane 2: 200 ng of NR-4218