

***Vibrio cholerae*, Strain HC-1A2**

Catalog No. NR-28836

Product Description: *Vibrio cholerae* (*V. cholerae*), strain HC-1A2 was deposited as a serogroup non-O1/non-O139 strain that was isolated from a patient in Haiti in 2010.

Lot¹: 63087130

Manufacturing Date: 26NOV2014

TEST	SPECIFICATIONS	RESULTS
Phenotypic Analysis Cellular morphology Colony morphology ² Hemolysis ³ Motility (wet mount) VITEK [®] MS (MALDI-TOF)	Gram-negative rods Report results Report results Report results Consistent with <i>V. cholerae</i>	Gram-negative rods Circular, low convex, entire, smooth and yellow (Figure 1) α-hemolytic Motile Consistent with <i>V. cholerae</i>
Genotypic Analysis Sequencing of 16S ribosomal RNA gene (~ 820 base pairs)	Consistent with <i>V. cholerae</i>	Consistent with <i>V. cholerae</i> ^{4,5}
Purity (post-freeze)⁶	Growth consistent with <i>V. cholerae</i>	Growth consistent with <i>V. cholerae</i>
Viability (post-freeze)²	Growth	Growth

¹NR-28836 was produced by inoculation of the deposited material into Brain Heart Infusion broth and grown 24 hours at 37°C in an aerobic atmosphere. Broth inoculum was added to Brain Heart Infusion agar kolles which were grown 24 hours at 37°C in an aerobic atmosphere to produce this lot.

²24 hours at 37°C in an aerobic atmosphere on Brain Heart Infusion agar

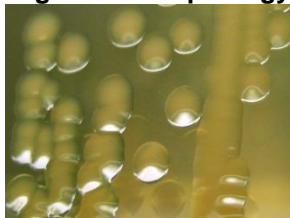
³24 hours at 37°C in an aerobic atmosphere on Tryptic Soy agar with 5% defibrinated sheep blood

⁴Identical to *V. cholerae*, strain HC-1A2 (GenBank: AJRO01000008)

⁵Also consistent with other *Vibrio* species

⁶Purity of this lot was assessed for 7 days on Tryptic Soy agar with 5% defibrinated sheep blood under propagation conditions.

Figure 1 - Morphology



Date: 21 MAY 2015

Signature:

BEI Resources Authentication

ATCC[®], on behalf of BEI Resources, hereby represents and warrants that the material provided under this certificate has been subjected to the tests and procedures specified and that the results described, along with any other data provided in this certificate, are true and accurate to the best of ATCC[®]'s knowledge.

ATCC[®] is a trademark of the American Type Culture Collection.

You are authorized to use this product for research use only. It is not intended for human use.

