

***Fusobacterium* sp., Strain CM21**

Catalog No. HM-871

Product Description: *Fusobacterium* sp., strain CM21 is a human oral isolate.

Lot^{1,2}: 63140948

Manufacturing Date: 09JAN2015

TEST	SPECIFICATIONS	RESULTS
Phenotypic Analysis Cellular morphology Colony morphology ³ Motility (wet mount)	Report results Report results Report results	Gram-negative rods Circular, low convex, entire, rough and gray (Figure 1) Non-motile
Genotypic Analysis Sequencing of 16S ribosomal RNA gene (~ 1220 base pairs)	≥ 99% identical to GenBank: AZYU01000199 (<i>Fusobacterium</i> sp., strain CM21)	≥ 99% identical to GenBank: AZYU01000199 (<i>Fusobacterium</i> sp., strain CM21)
Purity (post-freeze) Anaerobic growth ⁴ Aerobic growth ⁵	Growth consistent with <i>Fusobacterium</i> sp. No growth	Growth consistent with <i>Fusobacterium</i> sp. No growth
Viability (post-freeze)³	Growth	Growth

¹Quality control of HMP material is only performed to demonstrate that the material distributed by BEI Resources is identical to the deposited material. It should not be considered a complete characterization of the deposited organism.

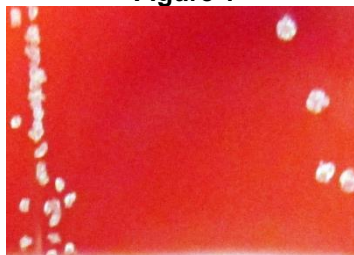
²*Fusobacterium* sp., strain CM21 was deposited by Maria V. Sizova, Ph.D., Department of Biology, Northeastern University, Boston, Massachusetts, USA. HM-871 was produced by inoculation of the deposited material into Modified Chopped Meat medium and incubated for 47 hours at 37°C in an anaerobic atmosphere (< 5% O₂; Remel™ Pack-Anaero™). Broth inoculum was added to Tryptic Soy agar with 5% defibrinated sheep blood kolles which were grown 47 hours at 37°C in an anaerobic atmosphere to produce this lot.

³47 hours at 37°C in an anaerobic atmosphere on Tryptic Soy agar with 5% defibrinated sheep blood

⁴Purity of this lot was assessed for 8 days on Tryptic Soy agar with 5% defibrinated sheep blood at 37°C in an anaerobic atmosphere.

⁵Purity of this lot was assessed for 8 days on Tryptic Soy agar with 5% defibrinated sheep blood at 37°C in an aerobic atmosphere with 5%CO₂.

Figure 1



Date: 18 MAR 2015

Signature:

Title: Technical Manager, BEI Authentication or designee

ATCC®, on behalf of BEI Resources, hereby represents and warrants that the material provided under this certificate has been subjected to the tests and procedures specified and that the results described, along with any other data provided in this certificate, are true and accurate to the best of ATCC®'s knowledge.

ATCC® is a trademark of the American Type Culture Collection.

You are authorized to use this product for research use only. It is not intended for human use.

