

Monoclonal Anti-*Mycobacterium leprae* ML0317/GroEL2, Clone CS-45 (produced *in vitro*)**Catalog No. NR-19366**

This reagent is the tangible property of the U.S. Government.

Product Description:

Antibody Class: IgG₁

Antibody Designation: CS-45

Monoclonal antibody to *Mycobacterium leprae* chaperonin family protein (ML0317/GroEL2; also known as 65 kDa heat shock protein) was produced in cell culture using a B cell hybridoma generated by the fusion of myeloma cells with immunized mouse splenocytes.

Lot: 62692901**Manufacturing Date: 23JUL2010**

Production and QC testing were performed by Colorado State University (CSU) under the Leprosy Research Support Contract (NIH). The CSU documentation for bulk lot mm.CS-45.07.23.10JS is attached. Each vial contains approximately 500 µL of NR-19366 provided as cell culture supernatant.

ATCC[®], on behalf of BEI Resources, hereby represents and warrants that the material provided under this certificate has been subjected by the contractor to the tests and procedures specified and that the results described, along with any other data provided in this certificate, are true and accurate to the best of ATCC[®]'s knowledge.

ATCC[®] is a trademark of the American Type Culture Collection.

You are authorized to use this product for research use only. It is not intended for human use.



TB Contract Antibody QC Sheet

General Information: Mouse monoclonal antibody to ML0317 (65 kDa heat shock protein, GroEL2)

Product: mouse monoclonal CS-45 7d culture supernatant

Lot Number: mm.CS-45.07.23.10JS

BEI Catalogue number: NR-19366

Species: *Mycobacterium leprae*

Strain: N/A Type: mouse mAb IgG1 subclass

Production Information:

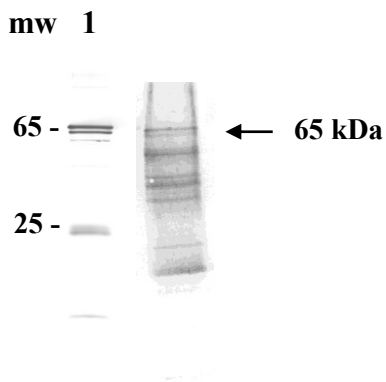
Cell Line: N/A Notebook/pp: John Spencer, Notebook #4, pp 62; 66-67

Amount of supernatant harvested: 80 ml Clarity: clear

QC Information: Western blot towards native *M. leprae* MLCwA (cell wall) protein and recombinant Rv0440. Notebook/pp: same as above Titer: >1:20 Western blot: >1:20

Special Instructions: Store frozen at -70°C until use

QC Western blot: lane 1, recombinant Rv0440, 5 nanograms; lane 2, 0.5 µg *M. leprae* native MLCwA protein.



CS-45
1:20

Aliquot Information: 8 x 10 ml

Produced 7/23/10

Lab Supervisor / Date 7/23/10