

Staphylococcus aureus, Strain CM05

Catalog No. HM-991

Product Description: *Staphylococcus aureus* (*S. aureus*), strain CM05 was isolated in 2005 in Medellin, Colombia from a tracheal aspirate of a patient with a fatal ventilator-associated pneumonia; it is a linezolid-resistant *S. aureus* (LRSA), methicillin-resistant *S. aureus* (MRSA) strain.

Lot^{1,2}: 63283084

Manufacturing Date: 11FEB2015

TEST	SPECIFICATIONS	RESULTS
Phenotypic Analysis Cellular morphology Colony morphology ³ Motility (wet mount)	Gram-positive cocci Report results Report results	Gram-positive cocci Circular, low convex, entire, opaque, smooth and cream (Figure 1) Non-motile
Genotypic Analysis Sequencing of 16S ribosomal RNA gene (~ 1490 base pairs)	≥ 99% identical to GenBank: AMAB01000004 (<i>S. aureus</i> , CM05)	≥ 99% identical to GenBank: AMAB01000004 (<i>S. aureus</i> , CM05)
Purity (post-freeze)⁴	Growth consistent with <i>S. aureus</i>	Growth consistent with <i>S. aureus</i>
Viability (post-freeze)³	Growth	Growth

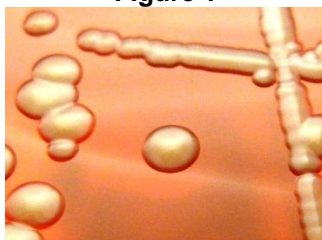
¹Quality control of HMP material is only performed to demonstrate that the material distributed by BEI Resources is identical to the deposited material. It should not be considered a complete characterization of the deposited organism.

²*S. aureus*, strain CM05 was deposited by Cesar A. Arias, M.D., Ph.D., Assistant Professor of Medicine, Department of Internal Medicine, The University of Texas Health Science Center at Houston, Houston, Texas, USA. HM-991 was produced by inoculation of the deposited material into Tryptic Soy broth and incubated for 21 hours at 37°C in an aerobic atmosphere. Broth inoculum was added to Tryptic Soy agar with 5% defibrinated sheep blood kolles which were grown 25 hours at 37°C in an aerobic atmosphere to produce this lot.

³24 hours at 37°C in an aerobic atmosphere on Tryptic Soy agar with 5% defibrinated sheep blood

⁴Purity of this lot was assessed in an aerobic atmosphere for 7 days at 37°C on Tryptic Soy agar with 5% defibrinated sheep blood.

Figure 1



Date: 06 APR 2015

Signature: 

BEI Resources Authentication

ATCC®, on behalf of BEI Resources, hereby represents and warrants that the material provided under this certificate has been subjected to the tests and procedures specified and that the results described, along with any other data provided in this certificate, are true and accurate to the best of ATCC®'s knowledge.

ATCC® is a trademark of the American Type Culture Collection. You are authorized to use this product for research use only. It is not intended for human use.

