

***Proteus mirabilis*, Strain WGLW6**

Catalog No. HM-753

Product Description: *Proteus mirabilis* (*P. mirabilis*), strain WGLW6 was isolated from a stool sample of a mouse with *T-bet*^{-/-} × *Rag2*^{-/-} ulcerative colitis (TRUC) in Boston, Massachusetts, USA.

Lot^{1,2}: 63025341

Manufacturing Date: 07JAN2015

TEST	SPECIFICATIONS	RESULTS
Phenotypic Analysis Cellular morphology Colony morphology ³ Motility (wet mount)	Gram-negative rods Report results Report results	Gram-negative rods Circular, low convex, entire, opaque and gray (Figure 1) Motile
Genotypic Analysis Sequencing of 16S ribosomal RNA gene (~ 900 base pairs)	≥ 99% identical to GenBank: AMGT01000011 (<i>P. mirabilis</i> , strain WGLW6)	≥ 99% identical to GenBank: AMGT01000011 (<i>P. mirabilis</i> , strain WGLW6)
Purity (post-freeze)⁴	Growth consistent with <i>P. mirabilis</i>	Growth consistent with <i>P. mirabilis</i>
Viability (post-freeze)³	Growth	Growth

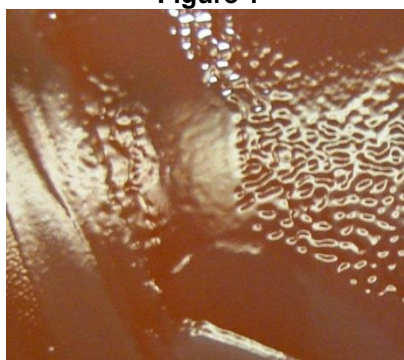
¹Quality control of HMP material is only performed to demonstrate that the material distributed by BEI Resources is identical to the deposited material. It should not be considered a complete characterization of the deposited organism.

²*P. mirabilis*, strain WGLW6 was deposited by Wendy S. Garrett, M.D., Ph.D., Assistant Professor, and Leslie H. Wardwell, Department of Immunology and Infectious Diseases, Harvard School of Public Health, Boston, Massachusetts, USA. HM-753 was produced from a frozen subculture of the deposited material. The subculture was cultivated in Nutrient broth for 23 hours at 37°C in an aerobic atmosphere. Broth inoculum was added to a Tryptic Soy agar with 5% defibrinated sheep blood kolle which was grown for 20 hours at 37°C in an aerobic atmosphere to produce this lot.

³24 hours at 37°C in an aerobic atmosphere on Tryptic Soy agar with 5% defibrinated sheep blood

⁴Purity of this lot was assessed in an aerobic atmosphere for 7 days at 37°C on Tryptic Soy agar with 5% defibrinated sheep blood.

Figure 1



Certificate of Analysis for HM-753

Date: 08 APR 2015

Signature: 

BEI Resources Authentication

ATCC[®], on behalf of BEI Resources, hereby represents and warrants that the material provided under this certificate has been subjected to the tests and procedures specified and that the results described, along with any other data provided in this certificate, are true and accurate to the best of ATCC[®]'s knowledge.

ATCC[®] is a trademark of the American Type Culture Collection.

You are authorized to use this product for research use only. It is not intended for human use.

