

***Vibrio cholerae*, Strain HCUF-01 (Biovar El Tor)**

**Catalog No. NR-28893**

**Product Description:** *Vibrio cholerae* (*V. cholerae*), strain HCUF-01 was deposited as a serogroup O1, biovar El Tor strain that was isolated from a patient in Haiti in 2010.

**Lot<sup>1</sup>: 63424843**

**Manufacturing Date: 25MAR2015**

TEST	SPECIFICATIONS	RESULTS
<b>Phenotypic Analysis</b> Cellular morphology Colony morphology <sup>2</sup>  Hemolysis <sup>2</sup> Motility (wet mount) VITEK <sup>®</sup> MS (MALDI-TOF)	Gram-negative rods Report results  Report results Report results Consistent with <i>V. cholerae</i>	Gram-negative curved rods Circular, convex, entire, smooth and gray (Figure 1) Non-hemolytic <sup>3</sup> Motile Consistent with <i>V. cholerae</i>
<b>Genotypic Analysis</b> Sequencing of 16S ribosomal RNA gene (~ 780 base pairs)	Consistent with <i>V. cholerae</i>	Consistent with <i>V. cholerae</i> <sup>4,5</sup>
<b>Purity (post-freeze)<sup>6</sup></b>	Growth consistent with <i>V. cholerae</i>	Growth consistent with <i>V. cholerae</i>
<b>Viability (post-freeze)<sup>2</sup></b>	Growth	Growth

<sup>1</sup>The deposited material was inoculated into Tryptic Soy broth and grown 27 hours at 37°C in an aerobic atmosphere. Broth inoculum was added to Tryptic Soy agar with 5% defibrinated sheep blood kolles and grown 20 hours under propagation conditions to produce this lot.

<sup>2</sup>24 hours on Tryptic Soy agar with 5% defibrinated sheep blood under propagation conditions

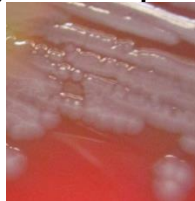
<sup>3</sup>On aerobic sheep blood agar plates, non-hemolytic *V. cholerae* frequently produces greenish clearing around areas of heavy growth but not around well-isolated colonies. This phenomenon, often described as "hemodigestion," is produced by metabolic by-products which are inhibited by anaerobic incubation of the blood agar plate. From Chapter VI. Laboratory Identification of *Vibrio cholerae* in: Laboratory Methods for the Diagnosis of *Vibrio cholerae*, Centers for Disease Control and Prevention <http://www.cdc.gov/cholera/laboratory.html>

<sup>4</sup>99.9% identical to *V. cholerae*, strain HCUF-01 (GenBank: AF001000003)

<sup>5</sup>Also consistent with other *Vibrio* species

<sup>6</sup>Purity of this lot was assessed for 7 days on Tryptic Soy agar with 5% defibrinated sheep blood under propagation conditions.

**Figure 1 - Morphology**



**Date:** 21 MAY 2015

**Signature:**

BEI Resources Authentication

ATCC<sup>®</sup>, on behalf of BEI Resources, hereby represents and warrants that the material provided under this certificate has been subjected to the tests and procedures specified and that the results described, along with any other data provided in this certificate, are true and accurate to the best of ATCC<sup>®</sup>'s knowledge.

ATCC<sup>®</sup> is a trademark of the American Type Culture Collection.

You are authorized to use this product for research use only. It is not intended for human use.

