

***Staphylococcus aureus* subsp. *aureus*, Strain JE2, Transposon Mutant NE16 (SAUSA300\_2221)**

**Catalog No. NR-46559**

**Product Description:** *Staphylococcus aureus* (*S. aureus*) subsp. *aureus*, transposon mutant NE16 was derived from *S. aureus* subsp. *aureus*, strain JE2. Mutagenesis occurred through the use of the *mariner*-based transposon *bursa aurealis* resulting in an erythromycin-resistant deletion strain of JE2. *S. aureus* subsp. *aureus*, transposon mutant NE16 was created by disruption of *moaD*, which encodes for a molybdopterin converting factor subunit involved in the biosynthesis of molybdenum cofactor that is essential for some redox enzymes. Strain JE2 is a plasmid-cured derivative of strain LAC that was isolated in 2002 from a skin and soft tissue infection of an inmate in the Los Angeles County Jail in California, USA.

**Lot<sup>1</sup>: 63431975**

**Manufacturing Date: 17APR2015**

TEST	SPECIFICATIONS	RESULTS
<b>Phenotypic Analysis</b> Cellular morphology Colony morphology <sup>2</sup>  Motility (wet mount)	Gram-positive cocci Report results  Report results	Gram-positive cocci Circular, convex, entire, smooth and cream (Figure 1) Non-motile
<b>Confirmation of Transposon Insertion<sup>3</sup></b>	Resistant to erythromycin	Resistant to erythromycin
<b>Purity (post-freeze)<sup>4</sup></b>	Growth consistent with <i>S. aureus</i>	Growth consistent with <i>S. aureus</i>
<b>Viability (post-freeze)<sup>2</sup></b>	Growth	Growth

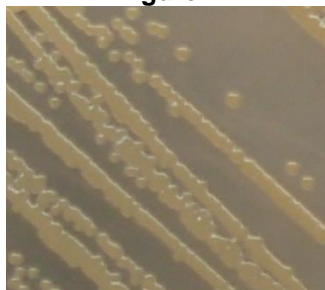
<sup>1</sup>NR-46559 was produced by inoculation of the deposited material into Tryptic Soy broth with 5 µg/mL erythromycin and incubated for 22 hours at 37°C in an aerobic atmosphere. Broth inoculum was added to Tryptic Soy agar with 5 µg/mL erythromycin kolles which were grown 23 hours at 37°C in an aerobic atmosphere to produce this lot.

<sup>2</sup>20 hours at 37°C in an aerobic atmosphere on Tryptic Soy agar with 5 µg/mL erythromycin

<sup>3</sup>Prior to initiating work, it is recommended that the presence and location of the transposon is confirmed. Gene specific primers should be paired with either the "Upstream" primer (5'-CTCGATTCTATTAACAAGGG-3') for transposons in the "plus" orientation or the "Buster" primer (5'-GCTTTTCTAAATGTTTTTAAGTAAATCAAGTAC-3') for transposons in the "minus" orientation. For additional information, refer to Fey, P. D., et al. "A Genetic Resource for Rapid and Comprehensive Phenotype Screening of Nonessential *Staphylococcus aureus* Genes." *MBio* 4 (2013): e00537-12. PubMed: 23404398.

<sup>4</sup>Purity of this lot was assessed for 7 days at 37°C in an aerobic atmosphere on Tryptic Soy agar with 5% defibrinated sheep blood.

**Figure 1**



**Date:** 22 MAY 2015

**Signature:** 

BEI Resources Authentication

ATCC<sup>®</sup>, on behalf of BEI Resources, hereby represents and warrants that the material provided under this certificate has been subjected to the tests and procedures specified and that the results described, along with any other data provided in this certificate, are true and accurate to the best of ATCC<sup>®</sup>'s knowledge.

ATCC<sup>®</sup> is a trademark of the American Type Culture Collection.

You are authorized to use this product for research use only. It is not intended for human use.

