

Polyclonal Anti-*Mycobacterium tuberculosis* Cytosol minus LAM (antiserum, Rabbit)**Catalog No. NR-13802**

This reagent is the tangible property of the U.S. Government.

Product Description:

Antibody Designation (Original Designation): α -CYTO(-)LAM

Polyclonal antiserum to the cytosol minus lipoarabinomannan (Cytosol-LAM) of *Mycobacterium tuberculosis*, strain H37Rv was produced in rabbits. The antiserum is reported to be active in ELISA and western blot assays.

Lot: 63291493**Manufacturing Date: 29APR2015**

Production and QC testing were performed by Colorado State University (CSU). The CSU documentation for lot 15.Anti-CYT(-)LAM.4.7.rp is attached.

ATCC[®], on behalf of BEI Resources, hereby represents and warrants that the material provided under this certificate has been subjected by the contractor to the tests and procedures specified and that the results described, along with any other data provided in this certificate, are true and accurate to the best of ATCC[®]'s knowledge.

ATCC[®] is a trademark of the American Type Culture Collection.

You are authorized to use this product for research use only. It is not intended for human use.



TB Contract Antibody QC Sheet

General Information:

Product: Polyclonal Antibody against Cytosol (-) LAM
Lot Number: 15.Anti-CYT(-)LAM.4.7.rp
Species: *Mycobacterium tuberculosis*
Strain: H37Rv
Type: Rabbit Serum

Production Information:

Cell Line: _____ SOP#: _____ Notebook/pp: _____
Amount of CS Harvested: _____ Clarity: clear
IgG Purification: _____ SOP#: _____ Notebook/pp: _____, _____

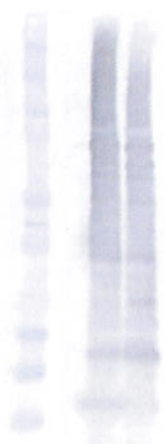
QC Information:

Filtered with 0.2 μ m PES filter
Tested Against: Subcellular Fractions SOP#: AB102
Notebook/pp: Keri Wright, Antibody Notebook, pgs 93-99
Titer: 1:20,000 Western blot: X ELISA: _____

Special Instructions:

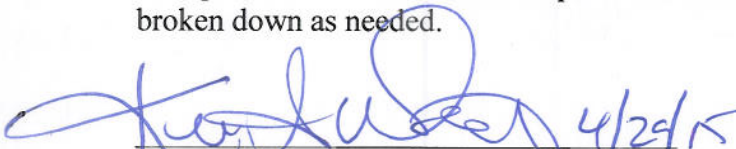
QC Western blot:

1. Protein Standard
2. CYT(-)LAM
3. CYT




Aliquot Information: 130 x .1 ml, 3 x 27 mL

*Aliquot information reflects aliquots made at the time of QC. Bulk aliquots will be broken down as needed.



Research Associate / Date 4/29/15



Lab Supervisor / Date 4/29/15