

***Bartonella alsatica*, Strain IBS 382**

Catalog No. NR-31055

This reagent is the tangible property of the U.S. Government.

Product Description: *Bartonella alsatica* (*B. alsatica*), strain IBS 382 was isolated from the blood of a wild rabbit (*Oryctolagus cuniculus*) caught near the Rhine River in Strasbourg, France, between October 1996 and January 1997 by R. Heller, University of Strasbourg, Strasbourg, France.

Lot¹: 61613136

Manufacturing Date: 03APR2013

TEST	SPECIFICATIONS	RESULTS
Phenotypic Analysis Cellular morphology Colony morphology ² Motility (wet mount) Biochemical tests: Catalase Oxidase	Gram-negative rod Report results Report results Negative Negative	Gram-negative rod Circular, convex, entire, smooth, opaque and cream (Figure 1) Non-motile Negative Negative
Genotypic Analysis Sequencing of 16S ribosomal RNA gene (~ 1400 base pairs)	Consistent with <i>B. alsatica</i>	Consistent with <i>B. alsatica</i> ^{3,4}
Purity (post-freeze)⁵	Growth consistent with <i>B. alsatica</i>	Growth consistent with <i>B. alsatica</i>
Viability (post-freeze)²	Growth	Growth

¹NR-31055 was produced by inoculation of the deposited material onto Tryptic Soy agar with 5% defibrinated sheep blood agar and grown 8 days at 37°C in an aerobic atmosphere with 5% CO₂. Colonies were suspended in Heart Infusion broth and used to inoculate Tryptic Soy agar with 5% defibrinated sheep blood kolles, which were grown 5 days under propagation conditions to produce this lot.

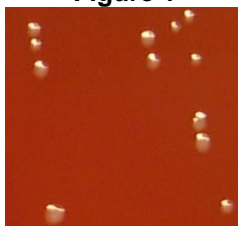
²7 days on Tryptic Soy agar with 5% defibrinated sheep blood under propagation conditions

³Also consistent with other *Bartonella* species

⁴100% identical to *B. alsatica*, strain IBS 382 (GenBank: AIME01000001.1)

⁵Purity of this lot was assessed for 7 days on Tryptic Soy agar with 5% defibrinated sheep blood agar under propagation conditions.

Figure 1



Date: 22 JUN 2015

Signature: 

BEI Resources Authentication

ATCC®, on behalf of BEI Resources, hereby represents and warrants that the material provided under this certificate has been subjected to the tests and procedures specified and that the results described, along with any other data provided in this certificate, are true and accurate to the best of ATCC®'s knowledge.

ATCC® is a trademark of the American Type Culture Collection.

You are authorized to use this product for research use only. It is not intended for human use.

