

***Pseudomonas aeruginosa*, Strain Shr42**

Catalog No. NR-48982

Product Description: *Pseudomonas aeruginosa* (*P. aeruginosa*), strain Shr42 was isolated from a human subject.

Lot¹: 63083625

Manufacturing Date: 03DEC2014

TEST	SPECIFICATIONS	RESULTS – Colony Type 1	RESULTS – Colony Type 2
Phenotypic Analysis Cellular morphology Colony morphology ^{2,3} Motility (wet mount) VITEK [®] 2 (GN Card)	Gram-negative rods Report results Report results Consistent with <i>P. aeruginosa</i>	Gram-negative rods Irregular, raised, undulate, translucent, opaque and gray (Figure 1) Motile Consistent with <i>P. aeruginosa</i>	Gram-negative rods Circular, convex, entire, smooth and gray (Figure 1) Motile Consistent with <i>P. aeruginosa</i>
Genotypic Analysis Sequencing of 16S ribosomal RNA gene (~ 1480 base pairs)	Consistent with <i>P. aeruginosa</i>	Consistent with <i>P. aeruginosa</i>	Consistent with <i>P. aeruginosa</i>
Purity (post-freeze)⁴	Consistent with <i>P. aeruginosa</i>	Consistent with <i>P. aeruginosa</i>	
Viability (post-freeze)²	Growth	Growth	

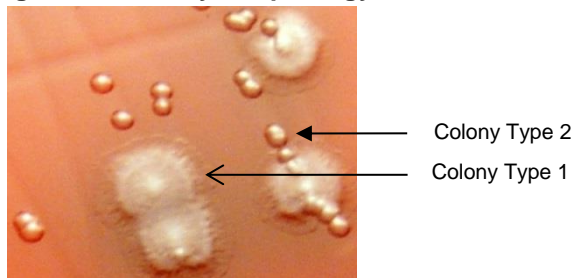
¹NR-48982 was produced by inoculation of the deposited material into Tryptic Soy broth and grown 23 hours at 37°C in an aerobic atmosphere. Broth inoculum was added to Tryptic Soy agar with 5% defibrinated sheep blood kolles which were grown 23 hours under propagation conditions to produce this lot.

²23 hours on Tryptic Soy agar with 5% defibrinated sheep blood under propagation conditions

³Two colony types were observed. Plating of the individual colony types showed no reversion to the mixed colonies after 24 hours. The 16S ribosomal RNA gene of each colony type was sequenced and found to be consistent with the other colony types and with *P. aeruginosa*. The observation of mixed colonies types has been reported previously for *P. aeruginosa*.

⁴Purity of this lot was assessed for 7 days on Tryptic Soy agar with 5% defibrinated sheep blood under propagation conditions.

Figure 1 – Colony Morphology



Date: 02 JUN 2015

Signature:

BEI Resources Authentication

ATCC[®], on behalf of BEI Resources, hereby represents and warrants that the material provided under this certificate has been subjected to the tests and procedures specified and that the results described, along with any other data provided in this certificate, are true and accurate to the best of ATCC[®]'s knowledge.

ATCC[®] is a trademark of the American Type Culture Collection.

You are authorized to use this product for research use only. It is not intended for human use.

