

***Bordetella holmesii*, Strain H572**

**Catalog No. NR-44167**

**Product Description:** *Bordetella holmesii* (*B. holmesii*), strain H572 was isolated in 2010 from synovial fluid of a patient in Colorado, USA.

**Lot<sup>1</sup>: 63527683**

**Manufacturing Date: 22MAY2015**

TEST	SPECIFICATIONS	RESULTS
<b>Phenotypic Analysis</b> Cellular morphology Colony morphology <sup>2</sup>  Motility (wet mount) Biochemical tests Biolog™ System <sup>3</sup>	Gram-negative bacilli Report results  Report results  Consistent with <i>B. holmesii</i>	Gram-negative bacilli Circular, convex, entire, smooth and gray (Figure 1) Non-motile  Consistent with <i>B. holmesii</i>
<b>Genotypic Analysis</b> Sequencing of 16S ribosomal RNA gene (~ 1470 base pairs)	Consistent with <i>B. holmesii</i>	Consistent with <i>B. holmesii</i> <sup>4</sup>
<b>Purity (post-freeze)<sup>5</sup></b>	Growth consistent with <i>B. holmesii</i>	Growth consistent with <i>B. holmesii</i>
<b>Viability (post-freeze)<sup>2</sup></b>	Growth	Growth

<sup>1</sup>NR-44167 was produced by inoculation of the deposited material into Brain Heart Infusion broth and incubated for 4 days at 37°C in an aerobic atmosphere. Broth inoculum was added to Tryptic Soy agar with 5% defibrinated sheep blood kolles and grown for 4 days at 37°C in an aerobic atmosphere to produce this lot.

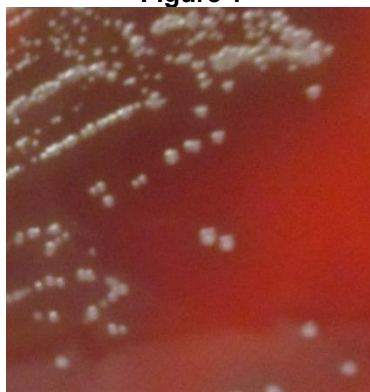
<sup>2</sup>4 days at 37°C in an aerobic atmosphere on Tryptic Soy agar with 5% defibrinated sheep blood

<sup>3</sup>Results interpreted using Biolog™ ID database GEN- III\_2.7.1.40.15G and Biolog™ MicroLog ID software 3/5.2.01 33

<sup>4</sup>100% identical to GenBank: JFZY01000037 (*B. holmesii*, Strain H572)

<sup>5</sup>Purity of this lot was assessed for 7 days on Tryptic Soy agar with 5% defibrinated sheep blood at 37°C in an aerobic atmosphere.

**Figure 1**



## Certificate of Analysis for NR-44167

**Date:** 13 JUL 2015

**Signature:**



BEI Resources Authentication

ATCC<sup>®</sup>, on behalf of BEI Resources, hereby represents and warrants that the material provided under this certificate has been subjected to the tests and procedures specified and that the results described, along with any other data provided in this certificate, are true and accurate to the best of ATCC<sup>®</sup>'s knowledge.

ATCC<sup>®</sup> is a trademark of the American Type Culture Collection.

You are authorized to use this product for research use only. It is not intended for human use.

