

***Bordetella bronchiseptica*, Strain E010**

Catalog No. NR-44161

Product Description: *Bordetella bronchiseptica* (*B. bronchiseptica*), strain E010 was isolated in 1971 from a human sample in Wisconsin, USA.

Lot¹: 63527651

Manufacturing Date: 28MAY2015

TEST	SPECIFICATIONS	RESULTS
Phenotypic Analysis Cellular morphology Colony morphology ² Motility (wet mount) VITEK [®] MS (MALDI-TOF)	Gram-negative bacilli Report results Report results Consistent with <i>B. bronchiseptica</i>	Gram-negative bacilli Circular, convex, entire, smooth and gray (Figure 1) Motile Consistent with <i>B. bronchiseptica</i>
Genotypic Analysis Sequencing of 16S ribosomal RNA gene (~ 1470 base pairs)	Consistent with <i>B. bronchiseptica</i>	Consistent with <i>B. bronchiseptica</i> ³
Purity (post-freeze)⁴	Growth consistent with <i>B. bronchiseptica</i>	Growth consistent with <i>B. bronchiseptica</i>
Viability (post-freeze)²	Growth	Growth

¹NR-44161 was produced by inoculation of the deposited material into Tryptic Soy broth and incubated for 4 days at 37°C in an aerobic atmosphere.

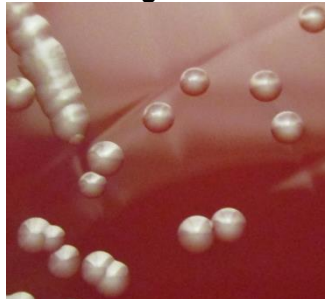
Broth inoculum was added to Tryptic Soy agar kolles which were grown for 2 days at 37°C in an aerobic atmosphere to produce this lot.

²2 days at 37°C in an aerobic atmosphere on Tryptic Soy agar with 5% defibrinated sheep blood

³100% identical to GenBank: JGWW01000067 (*B. bronchiseptica*, Strain E010)

⁴Purity of this lot was assessed for 7 days on Tryptic Soy agar with 5% defibrinated sheep blood at 37°C in an aerobic atmosphere.

Figure 1



Date: 13 JUL 2015

Signature:

BEI Resources Authentication

ATCC[®], on behalf of BEI Resources, hereby represents and warrants that the material provided under this certificate has been subjected to the tests and procedures specified and that the results described, along with any other data provided in this certificate, are true and accurate to the best of ATCC[®]'s knowledge.

ATCC[®] is a trademark of the American Type Culture Collection.

You are authorized to use this product for research use only. It is not intended for human use.

