

Genomic RNA from Enterovirus D68, US/KY/14-18953

Catalog No. NR-49137

This reagent is the property of the U.S. Government.

Product Description: Genomic RNA was isolated from a preparation of cell lysate and supernatant from human rhabdomyosarcoma (RD) cells¹ infected with enterovirus D68 (EV-D68), US/KY/14-18953.

Lot^{2,3}: 63312239

Manufacturing Date: 16MAR2015

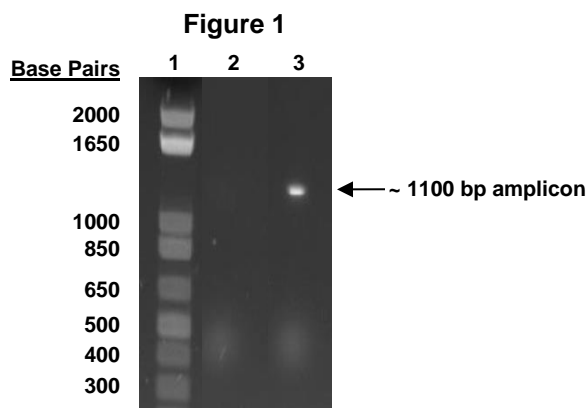
TEST	SPECIFICATIONS	RESULTS
Sequencing of Species-Specific Region Nucleoprotein gene (963 nucleotides)	Consistent with EV-D68, US/KY/14-18953 Consistent with NR-49132	99% identity with EV-D68, US/KY/14-18953 (GenBank: KM851231) Consistent with NR-49132
Functional Activity by RT-PCR Amplification³	~ 1100 bp amplicon	~ 1100 bp amplicon (Figure 1)
Total RNA Content by RiboGreen[®] Measurement (Viral, Cellular and Carrier)	Report results	98.3 ng per 100 µL
Virus Inactivation 10% of total yield inoculated on RD cells ¹ and evaluated for cytopathic effect ⁴	No virus detected	No virus detected

¹RD: ATCC[®] CCL-136[™]

²Nucleic acid was extracted from a preparation of enterovirus D68, US/KY/14-18953 (BEI Resources NR-49132, Lot 63205992), using a QIAamp[®] Viral RNA Mini Kit (Qiagen 52906).

³Amplified using iTaq[™] Universal SYBR[®] Green One-Step Kit (Bio-Rad 172-5151) with 5 µL of NR-49137 in a 50 µL reaction

⁴Use of the QIAamp[®] Viral RNA Mini Kit has been demonstrated to consistently inactivate 100% of enterovirus as shown by the absence of cytopathic effect (CPE) after plating the entire extract on virus-susceptible cells.



Lane 1: Invitrogen[™] TrackIt[™] 1 Kb Plus DNA Ladder
 Lane 2: Negative control
 Lane 3: NR-49137

Certificate of Analysis for NR-49137

Date: 20 JUL 2015

Signature: 

BEI Resources Authentication

ATCC[®], on behalf of BEI Resources, hereby represents and warrants that the material provided under this certificate has been subjected to the tests and procedures specified and that the results described, along with any other data provided in this certificate, are true and accurate to the best of ATCC[®]'s knowledge.

ATCC[®] is a trademark of the American Type Culture Collection.

You are authorized to use this product for research use only. It is not intended for human use.

