

Hemagglutinin (HA) Protein with C-Terminal Histidine Tag from Influenza Virus, B/Florida/4/2006 (Yamagata Lineage), Recombinant from Baculovirus

Catalog No. NR-15748

This reagent is the tangible property of the U.S. Government.

Product Description: The hemagglutinin (HA) protein from influenza B virus B/Florida/4/2006 (Yamagata Lineage) containing a C-terminal histidine tag was produced in High Five™ insect cells using a baculovirus expression vector system and was purified by metal affinity chromatography.

Lot: 58951683

Manufacturing Date: 25JUL2012

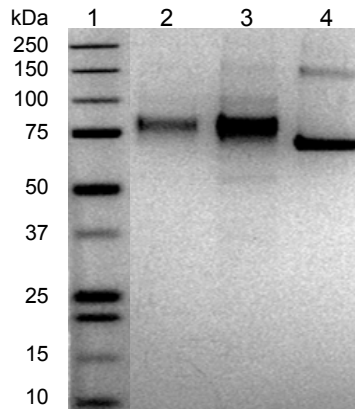
TEST	SPECIFICATIONS	RESULTS
Appearance	Clear and colorless	Clear and colorless
SDS-PAGE (Figure 1)	Dominant band of expected size (~75 kDa) > 95% pure	Dominant band of expected size (~75 kDa) > 95% pure
Purity by Coomassie Blue densitometer scan		
Concentration by Bradford Assay¹	Report results	75 µg/mL
Final Product		
Quantity per vial	Report results	25.0 µg
Volume per vial	Report results	333 µL
Functional Activity		
Hemagglutination aassay		
Chicken red blood cells	Report results	Active at ≥ 0.047 µg/mL
Turkey red blood cells	Report results	Active at ≥ 0.023 µg/mL
Western blot analysis		
Polyclonal anti-influenza B HA ²	Reactive	Reactive (Figure 2)
Monoclonal anti-histidine tag ³	Reactive	Reactive (Figure 3)
Sterility	Report results	0.45 µm filtered

¹Using BSA as a standard

²Immune Technology Corp. (Cat. No. IT-003-032)

³R & D Systems® (Cat. No. MAB050) (IgG₁)

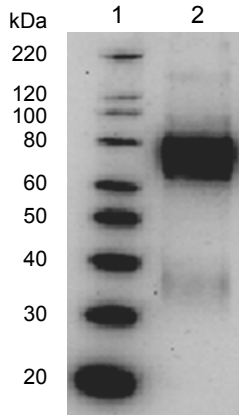
Figure 1 – SDS-PAGE



Lane 1: Precision Plus Protein™ All Blue Standards
 Lane 2: 0.75 µg NR-15748
 Lane 3: 1.5 µg NR-15748
 Lane 4: 1 µg BSA

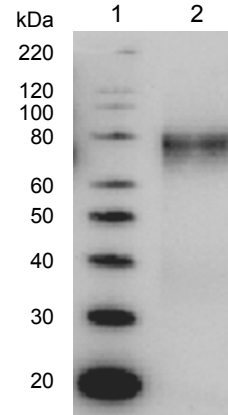
Certificate of Analysis for NR-15748

Figure 2 – Western Blot with Polyclonal Anti-HA



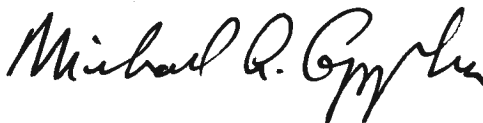
Lane 1: MagicMark™ XP Western Protein Standard
Lane 2: 0.5 µg NR-15748

Figure 3 – Western Blot with Monoclonal Anti-Histidine Tag



Lane 1: MagicMark™ XP Western Protein Standard
Lane 2: 0.5 µg NR-15748

Date: 10 OCT 2012

Signature: 

Title: Technical Manager, BEI Authentication or designee

ATCC®, on behalf of BEI Resources, hereby represents and warrants that the material provided under this certificate has been subjected to the tests and procedures specified and that the results described, along with any other data provided in this certificate, are true and accurate to the best of ATCC®'s knowledge.

ATCC® is a trademark of the American Type Culture Collection.
You are authorized to use this product for research use only. It is not intended for human use.

