

Staphylococcus aureus, Strain M1277 (MRSA)

Catalog No. NR-41893

Product Description: *Staphylococcus aureus* (*S. aureus*), strain M1277 was isolated in 2004 from blood of an adult female. *S. aureus*, strain M1277 is a methicillin-resistant *S. aureus* (MRSA) strain.

Lot¹: 63447989

Manufacturing Date: 17APR2015

TEST	SPECIFICATIONS	RESULTS
Phenotypic Analysis Cellular morphology Colony morphology ² Motility (wet mount) Oxacillin resistance ³ Hemolysis ² Biochemical characterization: Catalase VITEK [®] MS (MALDI-TOF)	Gram-positive cocci Report results Report results Resistant Report results Positive Consistent with <i>S. aureus</i>	Gram-positive cocci Circular, slight peaked, entire, smooth and gray (Figure 1) Non-motile Resistant β-hemolytic Positive Consistent with <i>S. aureus</i>
Genotypic Analysis Sequencing of 16S ribosomal RNA gene (~ 1490 base pairs)	Consistent with <i>S. aureus</i>	Consistent with <i>S. aureus</i>
Purity (post-freeze)⁴	Growth consistent with <i>S. aureus</i>	Growth consistent with <i>S. aureus</i>
Viability (post-freeze)²	Growth	Growth

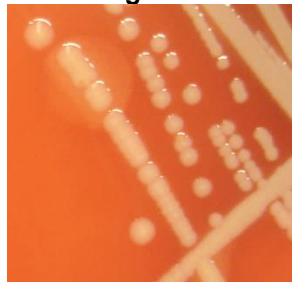
¹NR-41893 was produced by inoculation of the deposited material into Tryptic Soy broth and grown 18 hours at 37°C in an aerobic atmosphere. Broth inoculum was added to Tryptic Soy agar with 5% defibrinated sheep blood kolles which were grown for 28 hours at 37°C in an aerobic atmosphere to produce this lot.

²23 hours at 37°C in an aerobic atmosphere on Tryptic Soy agar with 5% defibrinated sheep blood

³24 hours at 30°C in an aerobic atmosphere on Mueller Hinton agar containing 6 µg/mL oxacillin and 4% NaCl (Oxacillin Screen agar BBL™ 221952)

⁴Purity of this lot was assessed for 7 days on Tryptic Soy agar with 5% defibrinated sheep blood at 37°C in an aerobic atmosphere.

Figure 1



Date: 22 JUL 2015

Signature: 

BEI Resources Authentication

ATCC[®], on behalf of BEI Resources, hereby represents and warrants that the material provided under this certificate has been subjected to the tests and procedures specified and that the results described, along with any other data provided in this certificate, are true and accurate to the best of ATCC[®]'s knowledge.

ATCC[®] is a trademark of the American Type Culture Collection.

You are authorized to use this product for research use only. It is not intended for human use.

