

Bacillus sp., Strain 7_6_55CFAA_CT2

Catalog No. HM-231

Product Description: *Bacillus sp.*, strain 7_6_55CFAA_CT2 was isolated in 2007 from a healthy gut biopsy specimen taken from a patient with Crohn's disease in Calgary, Alberta, Canada.

Lot^{1,2}: 63585548

Manufacturing Date: 24JUN2015

TEST	SPECIFICATIONS	RESULTS
Phenotypic Analysis Cellular morphology Colony morphology ³ Motility (wet mount)	Gram-positive rods Report results Report results	Gram-positive rods Irregular, flat, undulate, opaque, rough and cream (Figure 1) Motile
Genotypic Analysis Sequencing of 16S ribosomal RNA gene (~ 1490 base pairs)	≥ 99% identical to GenBank: ACWE01000117.1 (<i>Bacillus sp.</i> , strain 7_6_55CFAA_CT2)	≥ 99% identical to GenBank: ACWE01000117.1 (<i>Bacillus sp.</i> , strain 7_6_55CFAA_CT2)
Purity (post-freeze)⁴	Growth consistent with <i>Bacillus sp.</i>	Growth consistent with <i>Bacillus sp.</i>
Viability (post-freeze)³	Growth	Growth

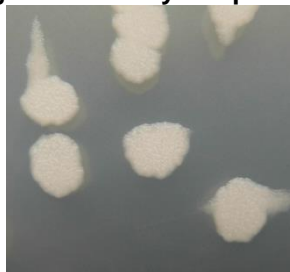
¹Quality control of HMP material is only performed to demonstrate that the material distributed by BEI Resources is identical to the deposited material. It should not be considered a complete characterization of the deposited organism.

²*Bacillus sp.*, strain 7_6_55CFAA_CT2 was deposited by Professor Emma Allen-Vercoe, Department of Molecular and Cellular Biology, University of Guelph, Guelph, Ontario, Canada. The deposited material was inoculated into Nutrient broth and grown at 30°C for 1 day in an aerobic atmosphere. Broth inoculum was added to Nutrient agar kolles, which were incubated for 1 day at 30°C in an aerobic atmosphere to produce this lot.

³1 day at 30°C in an aerobic atmosphere on Nutrient agar

⁴Purity of this lot was assessed for 7 days at 30°C in an aerobic atmosphere on Nutrient agar

Figure 1: Colony Morphology



Date: 04 AUG 2015

Signature: 

BEI Resources Authentication

ATCC®, on behalf of BEI Resources, hereby represents and warrants that the material provided under this certificate has been subjected to the tests and procedures specified and that the results described, along with any other data provided in this certificate, are true and accurate to the best of ATCC®'s knowledge.

ATCC® is a trademark of the American Type Culture Collection. You are authorized to use this product for research use only. It is not intended for human use.

