

***Borrelia burgdorferi*, Signature-Tagged Mutagenesis Library Clone T04TC102 (Gene BB\_0841)**

**Catalog No. NR-22685**

**Product Description:** *Borrelia burgdorferi* (*B. burgdorferi*), strain B31 5A18NP1 STM library clone T04TC102 was produced by signature-tagged mutagenesis (STM) of the BB\_0841 gene.

**Lot<sup>1</sup>: 63447993**

**Manufacturing Date: 05MAY2015**

TEST	SPECIFICATIONS	RESULTS
<b>Phenotypic Analysis</b> Cellular morphology <sup>2</sup> Motility (wet mount)	Spirochete Report results	Spirochete Motile
<b>Genotypic Analysis</b> Sequencing of 16S ribosomal RNA gene (~ 1440 base pairs)	Consistent with <i>B. burgdorferi</i>	Consistent with <i>B. burgdorferi</i> <sup>3</sup>
<b>Purity (post-freeze)<sup>4</sup></b>	No growth observed	No growth observed
<b>Viability (post-freeze)</b> Visual observation LIVE/DEAD <sup>®</sup> BacLight <sup>™</sup> Bacterial Viability <sup>5</sup>	Growth Green fluorescence visible	Growth <sup>2</sup> Green fluorescence visible (Figure 1) <sup>5</sup>

<sup>1</sup>NR-22685 was produced by inoculation of the deposited material into Revised Barbour-Stoener-Kelly medium supplemented with 200 µg/mL kanamycin and 40 µg/mL gentamicin and grown 14 days at 32°C in a microaerophilic atmosphere to produce this lot.

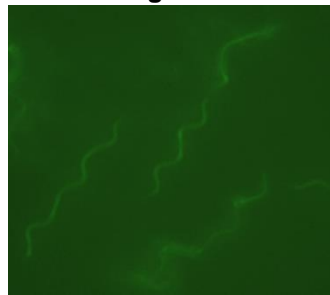
<sup>2</sup>7 days at 32°C in a microaerophilic atmosphere in Revised Barbour-Stoener-Kelly medium supplemented with 200 µg/mL kanamycin and 40 µg/mL gentamicin

<sup>3</sup>≥ 99.9% identical to GenBank: AE000783 (*B. burgdorferi*, strain B31)

<sup>4</sup>7 days at 37°C in an aerobic atmosphere with 5% CO<sub>2</sub> on Tryptic Soy agar with 5% defibrinated sheep blood

<sup>5</sup>Determined after 7-day incubation under cultivation conditions with LIVE/DEAD<sup>®</sup> BacLight<sup>™</sup> Bacterial Viability Kit, 100x magnification (Invitrogen<sup>™</sup> L34856). Cells with a compromised membrane that are dead or dying will stain red, while cells with an intact membrane will stain green.

**Figure 1**



**Date:** 11 AUG 2015

**Signature:**

**BEI Resources Authentication**

ATCC<sup>®</sup>, on behalf of BEI Resources, hereby represents and warrants that the material provided under this certificate has been subjected to the tests and procedures specified and that the results described, along with any other data provided in this certificate, are true and accurate to the best of ATCC<sup>®</sup>'s knowledge.

ATCC<sup>®</sup> is a trademark of the American Type Culture Collection.

You are authorized to use this product for research use only. It is not intended for human use.

