

Escherichia coli, Strain 493/89

Catalog No. NR-20446

Product Description: *Escherichia coli* (*E. coli*), strain 493/89 was isolated in 1989 from a human patient with hemolytic uremic syndrome (HUS) treated in a pediatric center in Germany. Strain 493/89 has been typed as an O157:H- serotype, sorbitol-fermenting (SF) enterohemorrhagic *E. coli* (EHEC).

Lot¹: 63325992

Manufacturing Date: 13FEB2015

TEST	SPECIFICATIONS	RESULTS
Phenotypic Analysis Cellular morphology Colony morphology ² Motility (wet mount) VITEK [®] 2 (GN Card)	Gram-negative rods Report results Report results Consistent with <i>E. coli</i>	Gram-negative rods Circular, convex, entire, smooth and cream (Figure 1) Motile ³ Consistent with <i>E. coli</i>
Genotypic Analysis Sequencing of 16S ribosomal RNA gene (~ 1470 base pairs)	Consistent with <i>E. coli</i>	Consistent with <i>E. coli</i> ^{4,5}
PCR Assay of Extracted DNA 16S ribosomal RNA gene PCR amplification of chromosomal borne virulence markers <i>stx1</i> <i>stx2</i>	~ 1500 base pair amplicon Negative Positive	~ 1500 base pair amplicon Negative Positive
Purity (post-freeze)⁶	Growth consistent with <i>E. coli</i>	Growth consistent with <i>E. coli</i>
Viability (post-freeze)²	Growth	Growth

¹The deposited material was inoculated into Tryptic soy broth and grown 24 hours at 37°C in an aerobic atmosphere, and the resulting subculture was vialied and frozen. NR-20446 was produced by inoculation of the frozen subculture into Tryptic soy broth and grown 24 hours at 37°C in an aerobic atmosphere. Broth inoculum was added to Tryptic soy agar kolles which were grown 23 hours under propagation conditions to produce this lot.

²22 hours on Tryptic soy agar under propagation conditions

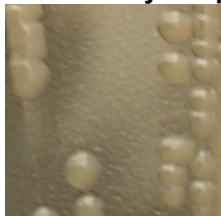
³*E. coli*, strain 493/89 is reported as non-motile in literature, however, motility was observed using wet mount technique.

⁴≥ 99.1% identical to GenBank: AETY01000060.1 (*E. coli*, strain 493/89)

⁵Also consistent with *Shigella* species

⁶Purity of this lot was assessed for 8 days on Tryptic soy agar under propagation conditions.

Figure 1: Colony Morphology



Date: 12 AUG 2015

Signature:

BEI Resources Authentication

ATCC[®], on behalf of BEI Resources, hereby represents and warrants that the material provided under this certificate has been subjected by the contributor to the tests and procedures specified and that the results described, along with any other data provided in this certificate, are true and accurate to the best of ATCC[®]'s knowledge.

ATCC[®] is a trademark of the American Type Culture Collection.

You are authorized to use this product for research use only. It is not intended for human use.

