

***Staphylococcus epidermidis*, Strain SK135**

Catalog No. HM-118

Product Description: *Staphylococcus epidermidis* (*S. epidermidis*), strain SK135 was isolated from normal skin of the right arm of a 57-year-old man.

Lot^{1,2}: 63359944

Manufacturing Date: 08APR2015

TEST	SPECIFICATIONS	RESULTS
Phenotypic Analysis Cellular morphology Colony morphology ³ Motility (wet mount)	Gram-positive cocci Report results Report results	Gram-positive cocci Circular, convex, entire, smooth and cream (Figure 1) Non-motile
Genotypic Analysis Sequencing of 16S ribosomal RNA gene (~ 1490 base pairs)	≥ 99% identical to GenBank: ADEY01000016 (<i>S. epidermidis</i> , strain SK135)	≥ 99% identical to GenBank: ADEY01000016 (<i>S. epidermidis</i> , strain SK135)
Purity (post-freeze)⁴	Growth consistent with <i>S. epidermidis</i>	Growth consistent with <i>S. epidermidis</i>
Viability (post-freeze)³	Growth	Growth

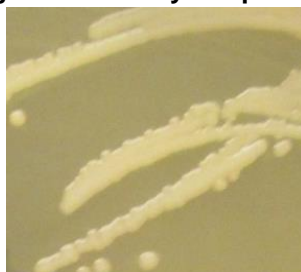
¹Quality control of HMP material is only performed to demonstrate that the material distributed by BEI Resources is identical to the deposited material. It should not be considered a complete characterization of the deposited organism.

²*S. epidermidis*, strain SK135 was deposited by Guillermo I. Perez-Perez, D.Sc., Associate Professor of Medicine, Departments of Medicine and Microbiology, School of Medicine, New York University, New York, New York, USA. HM-118 was produced by inoculation of HMS-118 (lot 59265319) into Brain Heart Infusion broth and grown 21 hours at 37°C in an aerobic atmosphere. Broth inoculum was added to Brain Heart Infusion agar kolles which were grown 23 hours at 37°C in an aerobic atmosphere to produce this lot.

³20 hours at 37°C on Brain Heart Infusion agar in an aerobic atmosphere

⁴Purity of this lot was assessed for 7 days at 37°C on Brain Heart Infusion agar in an aerobic atmosphere.

Figure 1: Colony Morphology



Date: 12 AUG 2015

Signature: 
 BEI Resources Authentication

ATCC®, on behalf of BEI Resources, hereby represents and warrants that the material provided under this certificate has been subjected to the tests and procedures specified and that the results described, along with any other data provided in this certificate, are true and accurate to the best of ATCC's knowledge.

ATCC® is a trademark of the American Type Culture Collection. You are authorized to use this product for research use only. It is not intended for human use.

