

***Bordetella bronchiseptica*, Strain E012**

**Catalog No. NR-44162**

**Product Description:** *Bordetella bronchiseptica* (*B. bronchiseptica*), strain E012 was isolated in 1977 from a human sample in Arizona, USA.

**Lot<sup>1</sup>: 63527652**

**Manufacturing Date: 28MAY2015**

TEST	SPECIFICATIONS	RESULTS
<b>Phenotypic Analysis</b> Cellular morphology Colony morphologies <sup>2,3</sup>  Motility (wet mount) VITEK <sup>®</sup> MS (MALDI-TOF)	Gram-negative bacilli Report results  Report results Consistent with <i>B. bronchiseptica</i>	Gram-negative bacilli Colony type 1: Large, circular, convex, entire, smooth, and gray (Figure 1) Colony type 2: Small, circular, convex, entire, smooth, and gray (Figure 1) Motile Consistent with <i>B. bronchiseptica</i>
<b>Genotypic Analysis</b> Sequencing of 16S ribosomal RNA gene (~ 1460 base pairs)	Consistent with <i>B. bronchiseptica</i>	Consistent with <i>B. bronchiseptica</i> <sup>4</sup>
<b>Purity (post-freeze)</b> <sup>5</sup>	Consistent with <i>B. bronchiseptica</i>	Consistent with <i>B. bronchiseptica</i>
<b>Viability (post-freeze)</b> <sup>2</sup>	Growth	Growth

<sup>1</sup>NR-44162 was produced by inoculation of the deposited material into Tryptic Soy broth and incubated for 4 days at 37°C in an aerobic atmosphere.

Broth inoculum was added to Tryptic Soy agar kolles which were grown for 2 days at 37°C in an aerobic atmosphere to produce this lot.

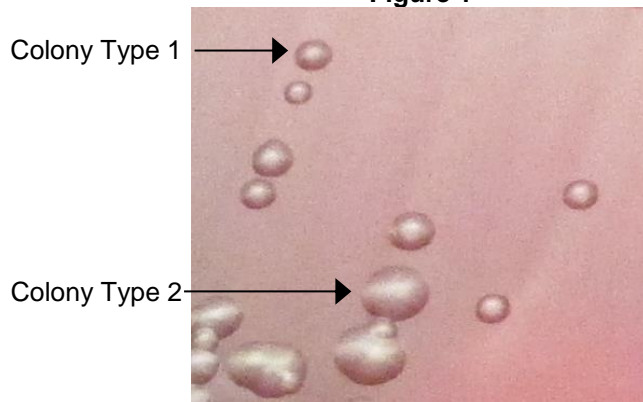
<sup>2</sup>2 days at 37°C in an aerobic atmosphere on Tryptic Soy agar with 5% defibrinated sheep blood

<sup>3</sup>Two colony types were observed. Plating of the individual colony types showed that they did not revert to the mixed colony type. VITEK<sup>®</sup> MS (MALDI-TOF) analysis identified cells from both colony types as *B. bronchiseptica*.

<sup>4</sup>100% identical to GenBank: JGWX01000057 (*B. bronchiseptica*, Strain E012)

<sup>5</sup>Purity of this lot was assessed for 7 days on Tryptic Soy agar with 5% defibrinated sheep blood at 37°C in an aerobic atmosphere.

**Figure 1**



## Certificate of Analysis for NR-44162

**Date:** 14 JUL 2015

**Signature:**



BEI Resources Authentication

ATCC<sup>®</sup>, on behalf of BEI Resources, hereby represents and warrants that the material provided under this certificate has been subjected to the tests and procedures specified and that the results described, along with any other data provided in this certificate, are true and accurate to the best of ATCC<sup>®</sup>'s knowledge.

ATCC<sup>®</sup> is a trademark of the American Type Culture Collection.  
You are authorized to use this product for research use only. It is not intended for human use.

