

**Genomic DNA from *Yersinia pestis*, Strain CO92**

**Catalog No. NR-2717**

This reagent is the property of the U.S. Government.

**Product Description:** NR-2717 contains genomic DNA extracted from a preparation of *Yersinia pestis* (*Y. pestis*), strain CO92, biovar Orientalis.

**Lot<sup>1</sup>: 63105708**

**Manufacturing Date: 26FEB2015**

TEST	SPECIFICATIONS	RESULTS
<b>Sequencing of 16S Ribosomal RNA Gene (~ 1480 base pairs)</b>	Consistent with <i>Y. pestis</i>	Consistent with <i>Y. pestis</i> <sup>2,3</sup>
<b>PCR Amplification of <i>Y. pestis</i> specific chromosomal region<sup>4</sup></b>	~ 800 base pair amplicon	~ 800 base pair amplicon
<b>Presence of Plasmids Confirmed by PCR Amplification<sup>4</sup></b> pMT1/pFra pCD1/pYV pPCP1/pPla/pPst	~ 1200 base pair amplicon ~ 1900 base pair amplicon ~ 400 base pair amplicon	~ 1200 base pair amplicon ~ 1900 base pair amplicon ~ 400 base pair amplicon
<b>Agarose Gel Electrophoresis</b>	High molecular weight chromosomal DNA	High molecular weight chromosomal DNA (Figure 1)
<b>Concentration by PicoGreen<sup>®</sup> Measurement</b>	0.7 to 1.5 µg in 25 to 100 µL per vial	0.94 µg in 33 µL per vial (28.5 µg/mL)
<b>Functional Activity by PCR Amplification</b> 16S ribosomal RNA gene	> 1000 base pair amplicon	~ 1500 base pair amplicon
<b>OD<sub>260</sub>/OD<sub>280</sub> Ratio</b>	1.7 to 2.1	1.8
<b>Bacterial Inactivation</b> 10% of total yield plated on agar <sup>5</sup>	No viable bacteria detected	No viable bacteria detected

<sup>1</sup>The bacterial preparation used for extraction of genomic DNA was produced by culture of BEI Resources NR-641 (Lot: 4464636). Genomic DNA was extracted using proprietary technology.

<sup>2</sup>100% sequence identity to GenBank: AL590842 (*Y. pestis*, strain CO92)

<sup>3</sup>Also consistent with other *Yersinia* species

<sup>4</sup>PCR was performed on NR-2717 lot 59176099, which was produced from the same seed lot of organism (NR-641 lot 4464636).

<sup>5</sup>An extraction procedure was used that has been shown to consistently inactivate 100% of Gram-negative and Gram-positive bacteria.

**Date:** 18 SEP 2015

**Signature:** 

BEI Authentication or designee

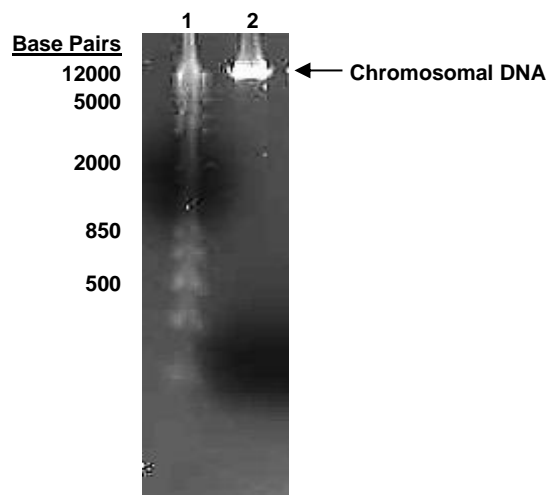
ATCC<sup>®</sup>, on behalf of BEI Resources, hereby represents and warrants that the material provided under this certificate has been subjected to the tests and procedures specified and that the results described, along with any other data provided in this certificate, are true and accurate to the best of ATCC<sup>®</sup>'s knowledge.

ATCC<sup>®</sup> is a trademark of the American Type Culture Collection.

You are authorized to use this product for research use only. It is not intended for human use.



Figure 1: Agarose Gel Electrophoresis of Genomic DNA  
Extracted from a Preparation of *Y. pestis*, Strain CO92



Lane 1: Invitrogen™ TrackIt 1 Kb Plus DNA Ladder™  
Lane 2: 200 ng of NR-2717