

***Sutterella wadsworthensis*, Strain HGA0223**

Catalog No. HM-852

Product Description: *Sutterella wadsworthensis* (*S. wadsworthensis*), strain HGA0223 was isolated from a biopsy of large intestine mucosa of a human subject in the United States.

Lot^{1,2}: 63539876

Manufacturing Date: 26JUN2015

TEST	SPECIFICATIONS	RESULTS
Phenotypic Analysis Cellular morphology Colony morphology ³ Motility (wet mount)	Gram-negative rods Report results Report results	Gram-negative rods Circular, flat, entire and smooth (Figure 1) Non-motile
Genotypic Analysis Sequencing of 16S ribosomal RNA gene (~ 1480 base pairs)	≥ 99% identical to GenBank: ATCF01000039.1 (<i>S. wadsworthensis</i> , strain HGA0223)	≥ 99% identical to GenBank: ATCF01000039.1 (<i>S. wadsworthensis</i> , strain HGA0223)
Purity (post-freeze) Anaerobic ⁴ Aerobic ⁵	Growth consistent with <i>S. wadsworthensis</i> No growth	Growth consistent with <i>S. wadsworthensis</i> No growth
Viability (post-freeze)³	Growth	Growth

¹Quality control of HMP material is only performed to demonstrate that the material distributed by BEI Resources is identical to the deposited material. It should not be considered a complete characterization of the deposited organism.

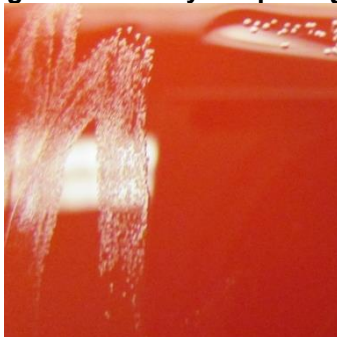
²*S. wadsworthensis*, strain HGA0223 was deposited by Thomas M. Schmidt, Professor, Department of Microbiology and Molecular Genetics, Michigan State University, East Lansing, Michigan, USA. HM-852 was produced by inoculation of the deposited material into Modified Chopped Meat medium containing 6% formate and 6% fumarate and incubated for 2 days at 37°C in an anaerobic atmosphere (< 5% O₂; Remel™ Pack-Anaero™). The initial growth was added to Tryptic Soy agar with 5% defibrinated sheep blood kolles which were grown 2 days at 37°C in an anaerobic atmosphere to produce this lot.

³2 days at 37°C in an anaerobic atmosphere on Tryptic Soy agar with 5% defibrinated sheep blood

⁴Purity of this lot was assessed for 7 days at 37°C in an anaerobic atmosphere on Tryptic Soy agar with 5% defibrinated sheep blood.

⁵Purity of this lot was assessed for 7 days at 37°C in an aerobic atmosphere with 5% CO₂ on Tryptic Soy agar with 5% defibrinated sheep blood.

Figure 1: Colony Morphology



Date: 25 SEP 2015

Signature: 

BEI Resources Authentication

ATCC[®], on behalf of BEI Resources, hereby represents and warrants that the material provided under this certificate has been subjected to the tests and procedures specified and that the results described, along with any other data provided in this certificate, are true and accurate to the best of ATCC[®]'s knowledge.

ATCC[®] is a trademark of the American Type Culture Collection.
You are authorized to use this product for research use only. It is not intended for human use.

