

Genomic DNA from *Brucella abortus*, Strain 12

Catalog No. NR-50049

Product Description: Genomic DNA was extracted from a preparation of *Brucella abortus* (*B. abortus*), strain 12, biovar 3 (BEI Resources NR-229 which was derived from ATCC® 17385™).

Lot¹: 63807278

Manufacturing Date: 30JAN2015

| TEST | SPECIFICATIONS | RESULTS |
|--|--|--|
| Sequencing of 16S Ribosomal RNA Gene (~ 1390 base pairs) | Consistent with <i>B. abortus</i> | Consistent with <i>B. abortus</i> ² |
| Agarose Gel Electrophoresis | High molecular weight chromosomal DNA | High molecular weight chromosomal DNA (Figure 1) |
| Concentration by PicoGreen® Measurement | 0.7 to 1.5 µg in 25 to 100 µL per vial | 1.0 µg in 56 µL per vial (18 µg/mL) |
| Functional Activity by PCR Amplification 16S ribosomal RNA gene | ~ 1500 base pair amplicon | ~ 1500 base pair amplicon |
| OD₂₆₀/OD₂₈₀ Ratio | 1.7 to 2.1 | 1.6 ³ |
| Bacterial Inactivation 10% of total yield plated on Tryptic Soy agar with 5% defibrinated sheep blood ^{4,5} | No viable bacteria detected | No viable bacteria detected |

¹The bacterial preparation used for extraction of genomic DNA was produced by culture of BEI Resources NR-229 (lot 4741450). Genomic DNA was extracted using proprietary technology.

²Also consistent with other *Brucella* species

³Lot 63807278 did not meet the OD₂₆₀/OD₂₈₀ ratio specifications for genomic DNA produced for BEI Resources, however, the integrity gel (Figure 1) shows intact genomic DNA and PCR amplification was successful. An OD₂₆₀/OD₂₈₀ ratio of 1.6 may indicate the presence of protein impurities.

⁴9 days at 37°C in an aerobic atmosphere with 5% CO₂

⁵An extraction procedure was used that has been shown to consistently inactivate 100% of Gram-negative and Gram-positive bacteria.

Date: 16 OCT 2015

Signature: 

BEI Authentication or designee

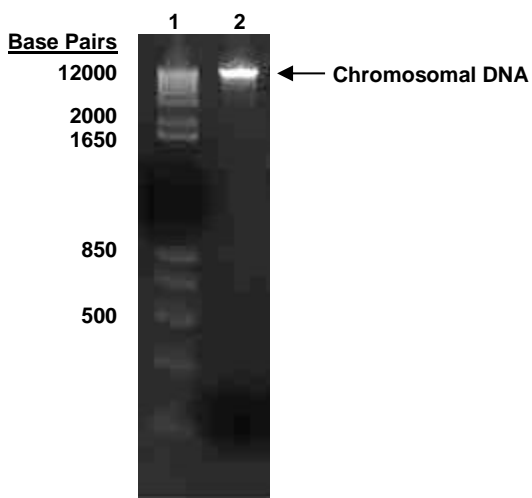
ATCC®, on behalf of BEI Resources, hereby represents and warrants that the material provided under this certificate has been subjected to the tests and procedures specified and that the results described, along with any other data provided in this certificate, are true and accurate to the best of ATCC®'s knowledge.

ATCC® is a trademark of the American Type Culture Collection.

You are authorized to use this product for research use only. It is not intended for human use.



Figure 1: Agarose Gel Electrophoresis



Lane 1: Invitrogen™ TrackIt 1 Kb Plus DNA Ladder™
Lane 2: 200 ng of NR-50049