

Genomic DNA from *Toxoplasma gondii*, Strain ME49 (B7 clone)

Catalog No. NR-15430

Product Description: Genomic DNA was isolated from *Toxoplasma gondii* (*T. gondii*), strain ME49 (B7 clone), which was originally isolated from a sheep in California.

Lot¹: 63069008

Manufacturing Date: 20NOV2014

TEST	SPECIFICATIONS	RESULTS
Agarose Gel Electrophoresis	High molecular weight chromosomal DNA	High molecular weight chromosomal DNA (Figure 1)
Content by PicoGreen[®] Measurement	1 to 3 µg in 25 to 150 µL per vial	1.5 µg in 122 µL per vial (12 µg/mL)
Functional Activity by PCR Amplification² 850 locus SAG1 locus	~ 750 base pair amplicon ~ 250 base pair amplicon	~ 750 base pair amplicon ~ 250 base pair amplicon
Genotyping³ 850 locus (<i>Sfa</i> NI digestion) SAG1 locus ⁴	Consistent with parental Type II strain Consistent with parental Type II strain	Consistent with parental Type II strain Consistent with parental Type II strain
OD₂₆₀/OD₂₈₀ Ratio	1.6 to 2.1	1.7
Protozoan Inactivation 10% of total yield plated on human foreskin fibroblast monolayers (ATCC [®] CRL-1634 TM) ⁵	No parasitemia observed	No parasitemia observed

¹NR-15430 was produced from a culture of BEI Resources NR-10150 lot 58219618. Genomic DNA was extracted using proprietary technology.

²Primer sequences and conditions for PCR are available upon request.

³PCR was performed separately for the 850 and SAG1 loci. Where appropriate, samples were subjected to restriction enzyme digestion as described in the *Toxoplasma* Genome Map website (http://toxomap.wustl.edu/Toxo_Genetic_Map_Table.html).

⁴Based on migration pattern of the SAG1 amplicon from NR-15430 during agarose gel electrophoresis as compared to BEI Resources NR-15431 (Genomic DNA from *Toxoplasma gondii*, strain CTG ARA-SYN)

⁵Incubated in DMEM (ATCC[®] 30-2002TM) with 10% heat-inactivated fetal bovine serum (ATCC[®] 30-2020TM) for 7 days at 37°C in an aerobic atmosphere with 5% CO₂.

Date: 25 SEP 2015

Signature:

BEI Resources Authentication

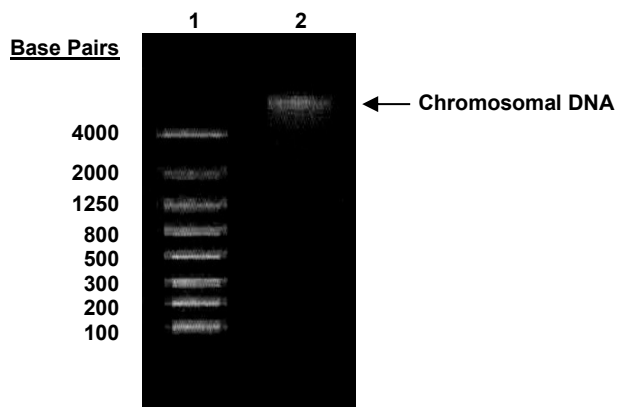
ATCC[®], on behalf of BEI Resources, hereby represents and warrants that the material provided under this certificate has been subjected to the tests and procedures specified and that the results described, along with any other data provided in this certificate, are true and accurate to the best of ATCC[®]'s knowledge.

ATCC[®] is a trademark of the American Type Culture Collection.

You are authorized to use this product for research use only. It is not intended for human use.



Figure 1: Agarose Gel Electrophoresis



Lane 1: Lonza FlashGel™ 4 kb DNA Marker
Lane 2: 37 ng of NR-15430