

***Borrelia burgdorferi*, Signature-Tagged Mutagenesis Library Clone T05TC185 (Gene BB_0419)**

Catalog No. NR-23157

Product Description: *Borrelia burgdorferi* (*B. burgdorferi*), strain B31 5A18NP1 STM library clone T05TC185 was produced by signature-tagged mutagenesis (STM) of the BB_0419 gene.

Lot¹: 63676634

Manufacturing Date: 21AUG2015

TEST	SPECIFICATIONS	RESULTS
Phenotypic Analysis Cellular morphology ² Motility (wet mount)	Spirochete Report results	Spirochete Motile
Genotypic Analysis Sequencing of 16S ribosomal RNA gene (~ 1410 base pairs)	Consistent with <i>B. burgdorferi</i>	Consistent with <i>B. burgdorferi</i> ³
Purity (post-freeze)⁴	No growth observed	No growth observed
Viability (post-freeze) Visual observation LIVE/DEAD [®] BacLight [™] Bacterial Viability	Growth Green fluorescence visible	Growth ² Green fluorescence visible (Figure 1) ⁵

¹NR-23157 was produced by inoculation of the deposited material into Revised Barbour-Stoenner-Kelly medium supplemented with 200 µg/mL kanamycin and 40 µg/mL gentamicin and grown 14 days at 32°C in a microaerophilic atmosphere to produce this lot.

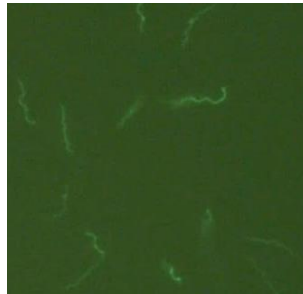
²14 days at 32°C in a microaerophilic atmosphere in Revised Barbour-Stoenner-Kelly medium supplemented with 200 µg/mL kanamycin and 40 µg/mL gentamicin

³≥ 99.9% sequence identity to GenBank: AE000783 (*B. burgdorferi*, strain B31)

⁴Purity of this lot was assessed for 14 days at 37°C in an aerobic atmosphere with 5% CO₂ on Tryptic Soy agar with 5% defibrinated sheep blood.

⁵Determined after 14-day incubation under cultivation conditions with LIVE/DEAD[®] BacLight[™] Bacterial Viability Kit, 100x magnification (Invitrogen[™] L34856). Cells with a compromised membrane that are dead or dying will stain red, while cells with an intact membrane will stain green.

Figure 1: LIVE/DEAD[®] BacLight[™] Bacterial Viability



Date: 23 OCT 2015

Signature:

BEI Resources Authentication

ATCC[®], on behalf of BEI Resources, hereby represents and warrants that the material provided under this certificate has been subjected to the tests and procedures specified and that the results described, along with any other data provided in this certificate, are true and accurate to the best of ATCC[®]'s knowledge.

ATCC[®] is a trademark of the American Type Culture Collection.

You are authorized to use this product for research use only. It is not intended for human use.

